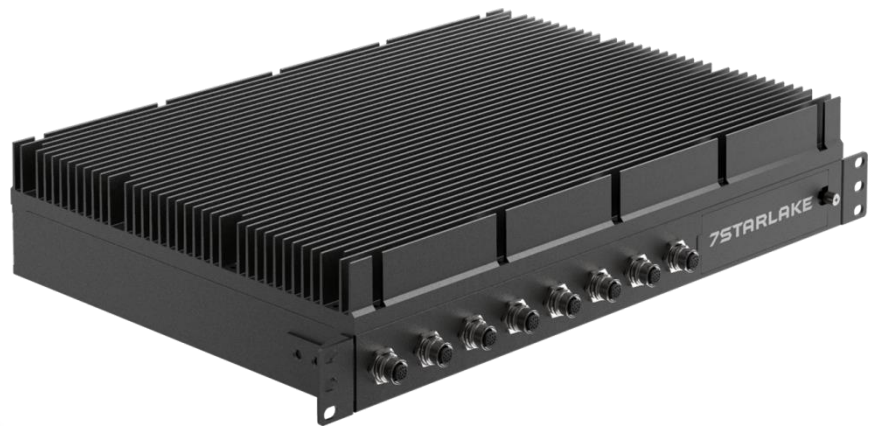




# R110-T4

AI ACCELERATED GPU SERVER  
BY XEON-D2100 FAMILY



## AI INFERENCE RUGGED SERVER

- Intel® Xeon® Skylake DE D2183IT CPU (16 Cores, up to 3.00 GHz)
- NVIDIA TELS A T4 GPU Card (2560 CUDA, 16GB GDDR6)
- DDR4-128GB (Option to 256GB)
- 16V~34V DC-DC 500W or 100V~240V AC-DC
- Storage(1): 1 x NVMe
- Storage(2): 2 x SATA 3.0 SSD
- MIL-STD 810 Anti Vibration/Shock
- IP54-rated for full system

# 1. Specification

## SYSTEM

CPU	Intel® Xeon® Skaylake DE D2183IT CPU (16 Cores, up to 3.00 GHz)
Memory type	DDR4-256GB
GPU	NVIDIA TELS A T4 GPU (2560 CUDA, 16GB GDDR6)

## DISPLAY

VGA	VGA
-----	-----

## STORAGE

Storage	Storage(1): 1 x NVMe Storage(2): 2 x SATA 3.0 SSD
---------	--

## REAR I/O

X1	1 x 10GbE
X2	1 x 10GbE
X3	1 x USB
X4	1 x VGA
X5	1 x GbE (IPMI)
X6	1 x GbE
X7	1 x GbE
X8	DC Input

## POWER REQUIREMENT

Power Input	16V~34V DC-DC 500W or 100V~240V AC-DC
-------------	---------------------------------------

## APPLICATIONS, OPERATING SYSTEM

Applications	
OS	Windows® 10 64-bit / Linux

## PHYSICAL

Dimension	300 x 315 x 86 mm (W x D x H)
Weight	3.5KG
Chassis	SECC

Heatsink	Aluminum Alloy, Corrosion Resistant
----------	-------------------------------------

Finish	Anodic aluminum oxide
--------	-----------------------

---

### **ENVIRONMENTAL**

---

Compliance	CE and FCC, RoHS
------------	------------------

IP Rating	Chassis: IP65 I/O connectors: IP67
-----------	---------------------------------------

Operating Temp.	0 to 55°C
-----------------	-----------

Storage Temp.	-20 to 70°C
---------------	-------------