

Horus200 and SR800 High-Performance Server



- High processing power
- Passive cooling
- High reliability under demanding conditions
- Minimal maintenance
- Versatile use



Horus200 and SR800 High-Performance Server

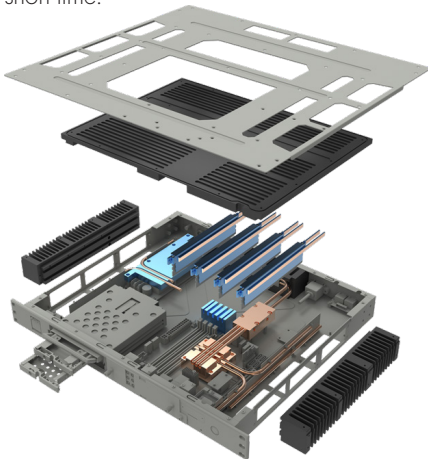
Fanless high-performance servers for civil and military applications, designed for challenging heat, shock, vibration and humidity conditions.

Versatile applications in military and civil environments

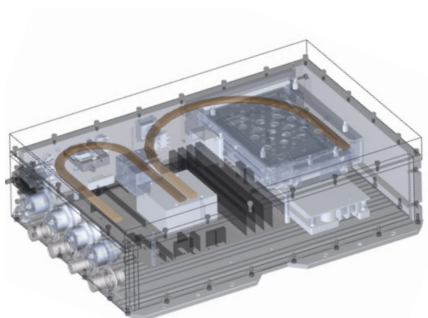
The high-performance Horus200 and SR800 servers are used wherever information superiority is to be guaranteed: On platforms covering a wide range of applications as civil protection, rescue organisations, transportation, military (sea, air, land) or heavy industry.

The extremely robust servers convince with their powerful performance, mechanical protection, passive cooling and an easy maintenance concept. Reliable performance in the harshest environment: be it heat, shock, vibration, humidity or EMI (Electromagnetic Interference)/EMC (Electromagnetic Compatibility) conditions.

The modular design, the two form factors (19 inch and vehicle) and the Thales installation kit allow customised adaptations in a short time.



Structure of Horus200



Structure of SR800



Horus200

SR800

Technical Data Horus200/SR800

Processor

High-performance processor: Intel® Xeon® processor D-1587 (frequency 1.7 GHz, Turbo Boost frequency up to 2.3 GHz), 16-Core, 32 Thread Support, 24 MB SmartCache. Build-in Turbo Boost Technology 2.0, VPro and Hyper-Threading Support

Memory

Memory type: 4 x DIMMs up to 128 GB ECC RDIMM DDR 4 2133 MHz

Chipset: SoC, integrated with CPU

Graphics

Graphics Processor: ASPEED AST2400

Resolution: Up to 1920x1200 @ 60 Hz 32 bpp

Storage media

Solid State Drives: 2x 2.5" SSD (removable without tools)

Ethernet

Horus200: Quad Gigabit Ethernet via Intel® i350-AM2 Dual 10GBase-T LAN via Intel® X557-AT2 Realtek RTL8201N PHY (dedicated IPMI)

SR800: 1x Intel® I350AM2 Gigabit LAN Interfaces (10/100/1000 Mbps)

Rear I/O

Horus200: 1x VGA, 2x USB 3.0 2x USB 2.0, 6x Ethernet, 1x RS232, 1x IPMI*, ON/OFF, Erase, CMOS Battery Tray, LEDs

SR800: 1x VGA, 2x USB 3.0 1x USB 2.0, 2x Ethernet, 1x RS232, 1x IPMI*, ON/OFF, Erase, CMOS Battery Tray, LEDs

* IPMI: Intelligent Platform Management Interface v2.0

Power supply / temperature

24 VDC (12...40 VDC, Max 150W, MIL STD 1275E)

0...50°C (operation), -40...85°C (storage), passive cooling

Dimensions / Weight / IP Protection

Horus200: 19" x 12.8" x 1.75" (1U) / 10.6 kg / IP50

SR800: 10.25" x 13.75" x 4" / 9.6 kg / IP54

Environmental conditions

Shock, vibration, drop, humidity: MIL-STD-810 G

EMC: MIL-STD-461 E or equivalent civilian standards