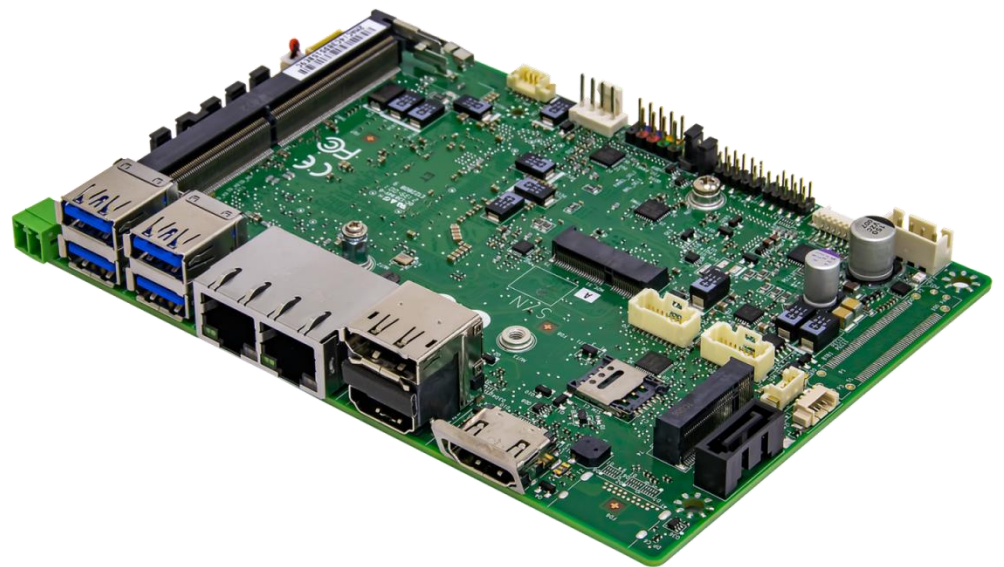




OXY5363A

3.5" SBC with Intel® Tiger Lake-UP3 SoC



User's Manual

Revision Date: March 18 , 2022

Safety Information

Electrical safety

- To prevent electrical shock hazard, disconnect the power cable from the electrical outlet before relocating the system.
- When adding or removing devices to or from the system, ensure that the power cables for the devices are unplugged before the signal cables are connected. If possible, disconnect all power cables from the existing system before you add a device.
- Before connecting or removing signal cables from the motherboard, ensure that all power cables are unplugged.
- Seek professional assistance before using an adapter or extension cord. These devices could interrupt the grounding circuit.
- Make sure that your power supply is set to the correct voltage in your area.
- If you are not sure about the voltage of the electrical outlet you are using, contact your local power company.
- If the power supply is broken, do not try to fix it by yourself. Contact a qualified service technician or your local distributor.

Operation safety

- Before installing the motherboard and adding devices on it, carefully read all the manuals that came with the package.
- Before using the product, make sure all cables are correctly connected and the power cables are not damaged. If you detect any damage, contact your dealer immediately.
- To avoid short circuits, keep paper clips, screws, and staples away from connectors, slots, sockets and circuitry.
- Avoid dust, humidity, and temperature extremes. Do not place the product in any area where it may become wet.
- Place the product on a stable surface.
- If you encounter any technical problems with the product, contact your local distributor

Statement

- All rights reserved. No part of this publication may be reproduced in any form or by any means, without prior written permission from the publisher.
- All trademarks are the properties of the respective owners.
- All product specifications are subject to change without prior notice

OXY5363A User's Manual

Revision Date: March 18, 2022

Revision History

Revision	Date (dd.mm.yyyy)	Changes
V1.0	03.18.2022	First release

Packing list

Item	Description	Q'ty
1	OXY5363A 3.5" SBC	1
2	CD(Drivier + User's manual)	1



If any of the above items is damaged or missing, please contact your local distributor.

Table of Contents

Safety Information	1
Electrical safety.....	1
Operation safety.....	1
Statement.....	1
Revision History	2
Packing list	2
Chapter 1: Product Information	5
1.1 Block Diagram	5
1.2 Key Features	6
1.3 I/O Placement.....	8
Chapter 2: JUMPER SETTING AND PIN DEFINITION	9
2.1 Jumper and Internal Connector List.....	9
2.2 Jumper Setting.....	11
2.3 Internal Connector Pin Define	13
2.4 External Connector Pin Define.....	13
Chapter 3: BIOS SETUP	17
3.1 Main Page	17
3.2 Advance Page.....	20
3.2.1 Onboard Device	22
3.2.2 CPU Configuration.....	25
3.2.3 Trusted Computing.....	27
3.2.4 NCT6126D Super IO Configuration	28
3.2.5 Serial Port 1 Configuration	30
3.2.6 Serial Port 2 Configuration	31
3.2.7 Serial Port 3 Configuration	32

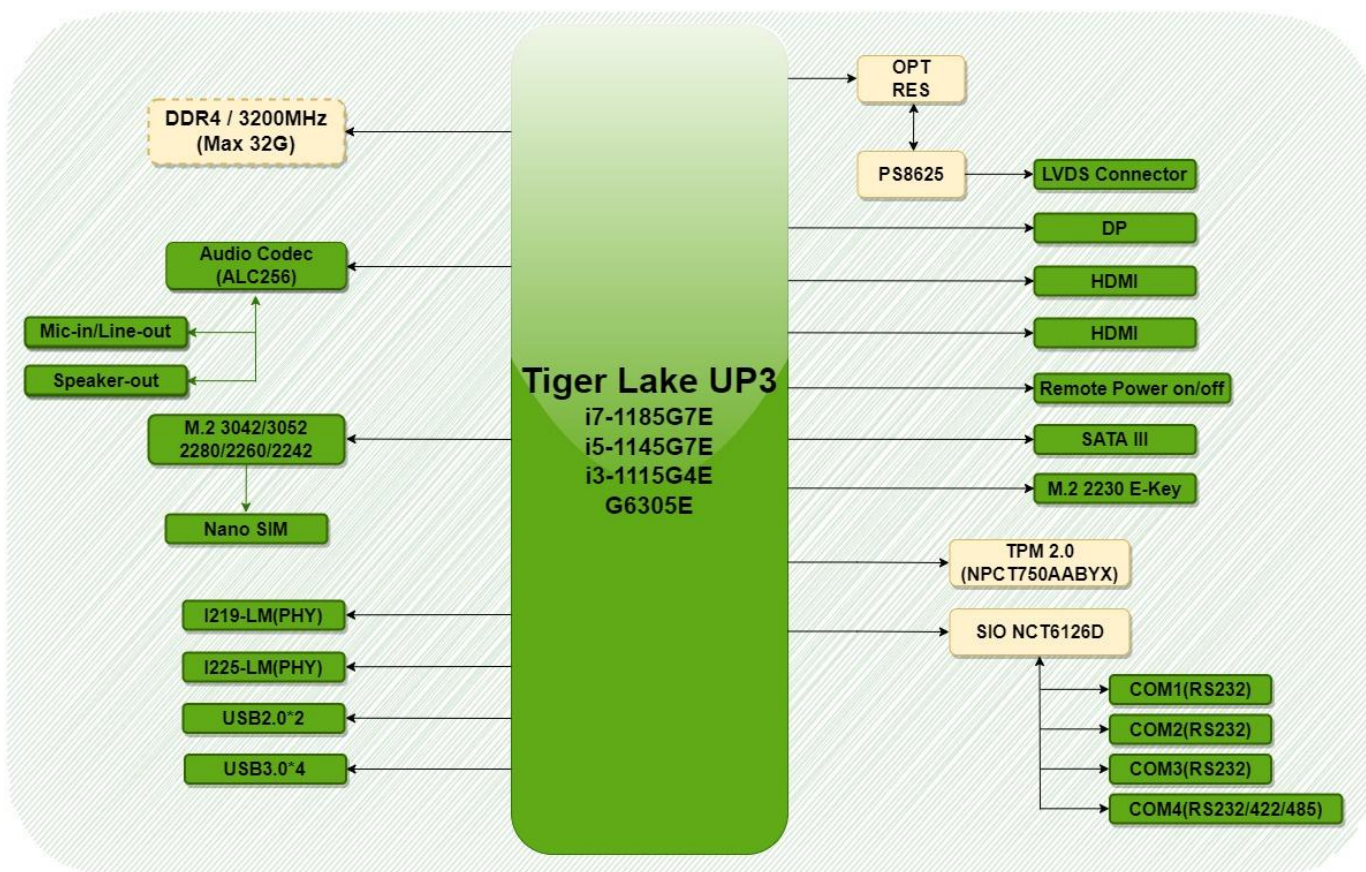
OXY5363A User's Manual

Revision Date: March 18, 2022

3.2.8 Serial Port 4 Configuration	33
3.2.9 Hardware Monitor	34
3.2.10 RTC Wake Settings.....	35
3.2.11 Networks Stack Configuration	36
3.2.12 NVMe Configuration	37
3.3 Event Logs.....	38
3.3.1 Enabling/Disabling Options.....	39
3.3.2 View Smbios Event logs	40
3.4 Security Page.....	41
3.4.1 HDD Security.....	42
3.4.2 Secure Boot.....	43
3.4.3 Key Management (Secure Boot Mode set to Custom).....	44
3.4.4 BIOS Update.....	49
3.5 Boot Page	50
3.5.1 (List Boot Device Type) Drive BBS Priorities	53
3.6 Save & Exit Page.....	54

Chapter 1: Product Information

1.1 Block Diagram



1.2 Key Features

System	
CPU	Intel® Core™ i7-1185G7E Processor (4 Cores/8 Threads, 12M Cache, up to 4.40GHz),15W/28W Intel® Core™ i5-1145G7E Processor (4 Cores/8 Threads, 8M Cache, up to 4.10GHz),15W/28W Intel® Core™ i3-1115G4E Processor (2 Cores/4 Threads, 6M Cache, up to 3.90GHz),15W/28W Intel® Celeron® 6305E Processor (2 Cores/2 Threads, 4M Cache, up to 1.80GHz),15W
Memory Type	DDR4 3200MHz / 1 x 260-pin SO-DIMM / Max. 32GB (Non-ECC)
Chipset	Intel® SoC Integrated
I/O Chipset	Nuvoton NCT6126D
TPM	Nuvoton NPCT750AABYXTPM2.0
H/W Monitor	Temperature Monitor, Voltage Monitor, Fan Monitor
Watchdog	1-255 sec. or 1-255 min. software programmable and can be generate system reset
Smart Fan Control	CPU Fan
BIOS	AMI BIOS
Expansion Slot	
M.2	1 x M.2 2230 E-key (Wifi & BT , PCIe / USB) 1 x M.2 2242 / 2260 / 2280 / 3042 / 3052 B-key (Storage / 5G / LTE, USB2.0 / PCIe x 1 / SATAIII)
Display	
Chipset	Intel® Iris Xe Graphics
HDMI 2.0b	Up to 4K (4096 x 2160) @ 60 Hz
Display Port 1.4	Up to 5120 x 3200 @ 60 Hz
LVDS	Up to 1920 x 1200 @ 60 Hz
Ethernet	
Chipset	Intel® I219-LM Giga LAN / Intel® I225-LM 2.5GbE LAN
Audio	
Codec	Realtek® ALC256
Rear I/O	
USB	4 x USB 3.1
Display Port	1 x DP ; 2 x HDMI
LAN	2(1 x GbE ; 1 x 2.5GbE)
Internal I/O	
SATAIII	1
USB2.0	2
Display I/O	1 x LVDS 1 x Backlight connector

OXY5363A User's Manual

Revision Date: March 18, 2022

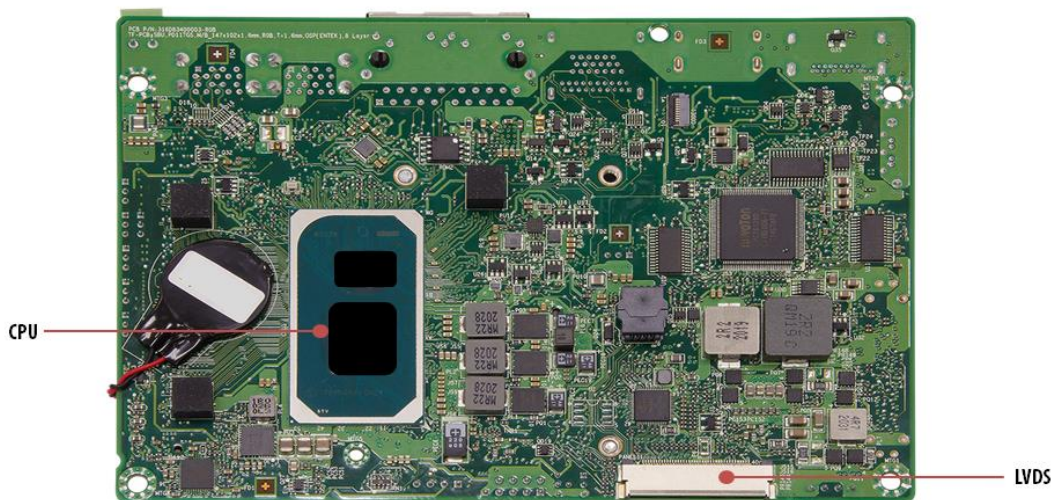
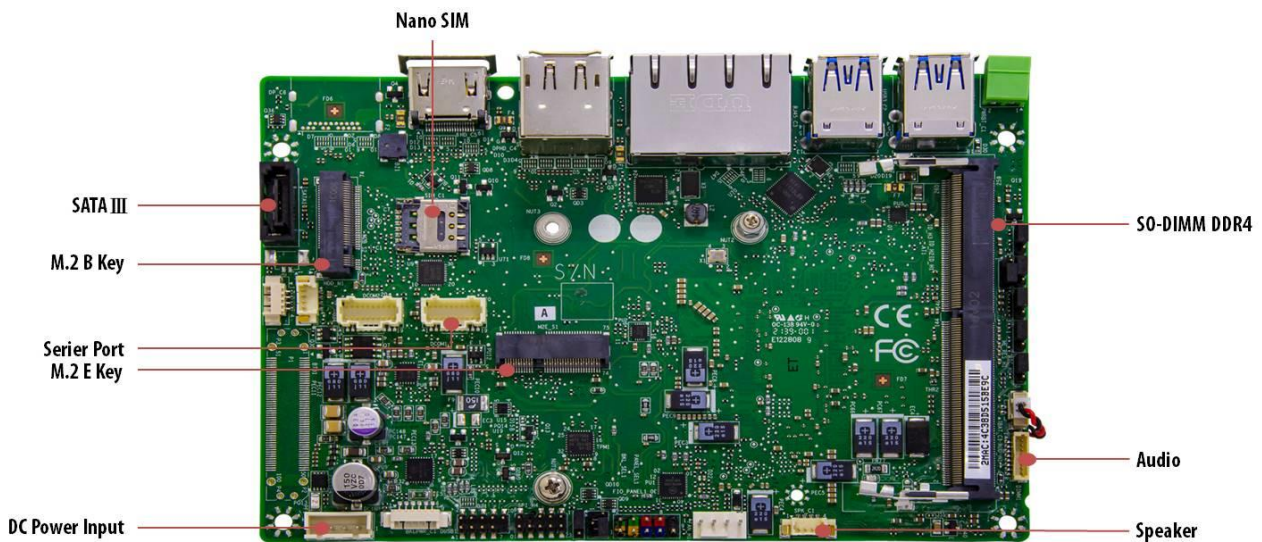
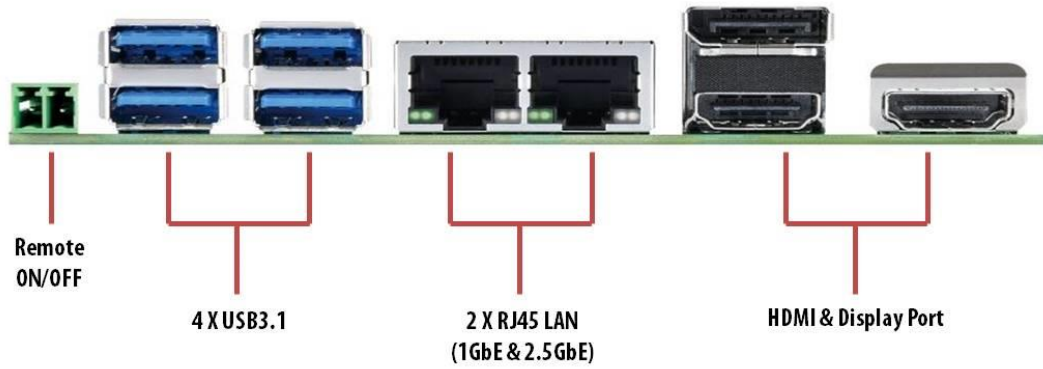
Audio	1 x Speaker connector 1 x Mic-in & Line-out
Serial	4 (1 x Support RS232 / 422 / 485)
CPU Fan	1
Power	1 x 8~24V 4-pin Power Connector, 1 x AT/ATX Mode Select Jumper
Front Panel Control	1 x Front IO Header (PWR ON / RESET / PWR LED / HDD LED)
Mechanical and Environment	
Form Factor	3.5"
Power Type	DC-IN 8~24V
Dimension	102mm x 147mm
Operating Temp.	ET : -20 to 70°C UT : -40 to 85°C
Storage Temp.	-40 to 85°C
Relative Humidity	10% to 90%, non-condensing
Standard Compliance	
Standard Compliance	CE/FCC
OS	
OS Support	Windows®10 64-bit Linux(Support by request)

***All specifications and photos are subject to change without notice.**

OXY5363A User's Manual

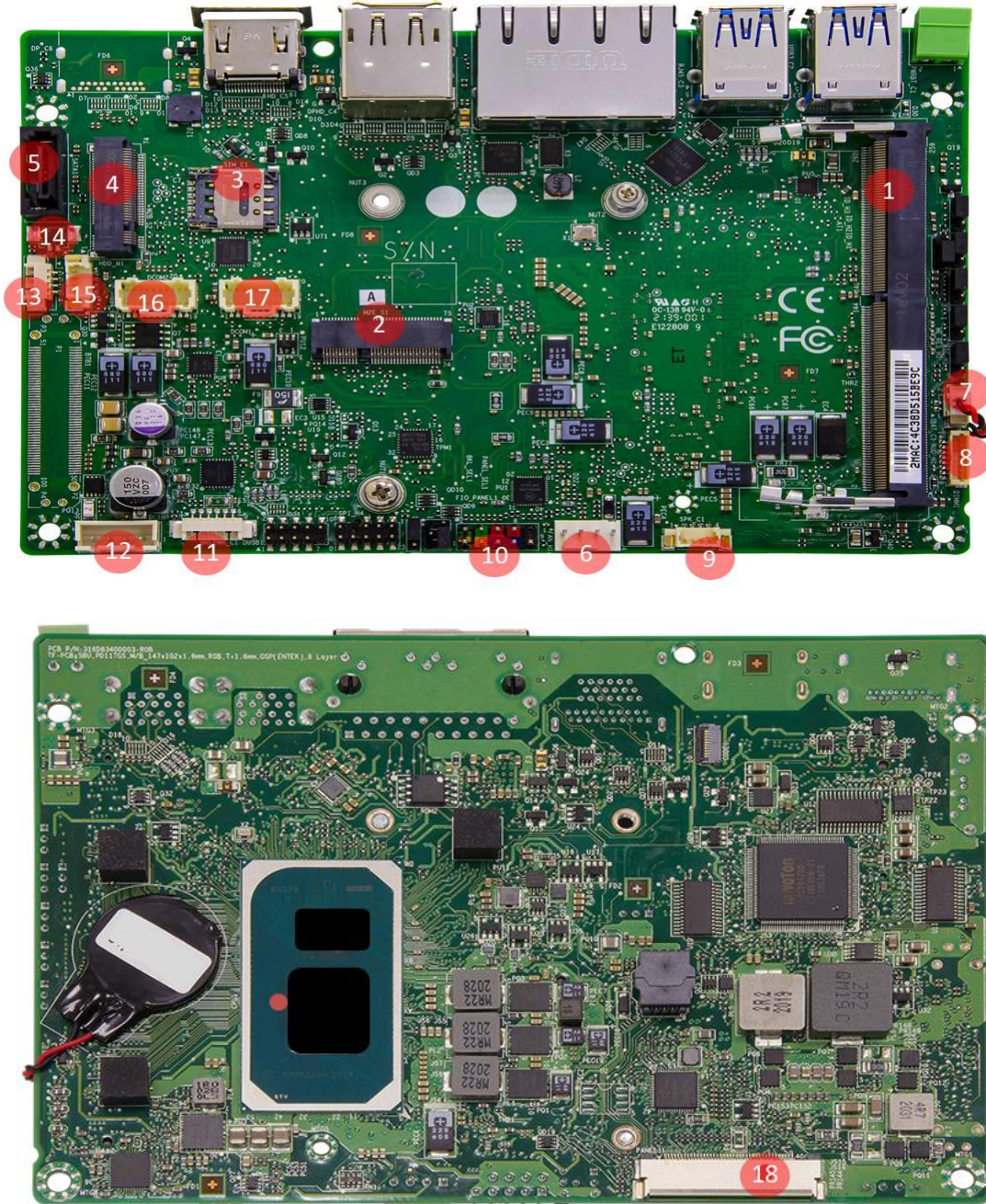
Revision Date: March 18, 2022

1.3 I/O Placement



Chapter 2: JUMPER SETTING AND PIN DEFINITION

2.1 Jumper and Internal Connector List



OXY5363A User's Manual

Revision Date: March 18, 2022

Label	Function
1	DDR4 SO-DIMM Slot
2	M.2 E-Key Slot
3	Nano SIM Socket
4	M.2 B-Key Slot
5	SATA 7P Connector
6	FAN Header
7	RTC Battery Socket
8	Audio Socket
9	Speaker Socket
10	Front I/O Header
11	Panel Backlight Power Socket
12	DC Input Socket
13	Output Power Connector
14	SATA SSD Detection Connector
15	SATA SSD Power Connector
16	Dual COM Port connector(COM3 & COM4 RS232)
17	Dual COM Port connector(COM1 RS232 & COM2 RS232)
18	LVDS connector

2.2 Jumper Setting



AT/ATX Mode

PIN	DEFINITION
Pin1/Pin2 (default) : ATX Mode	<p>PIN1 PIN2 PIN3</p>
Pin2/Pin3 : AT Mode	<p>PIN1 PIN2 PIN3</p>

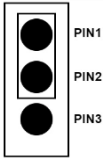
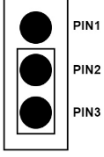
BIOS Clear

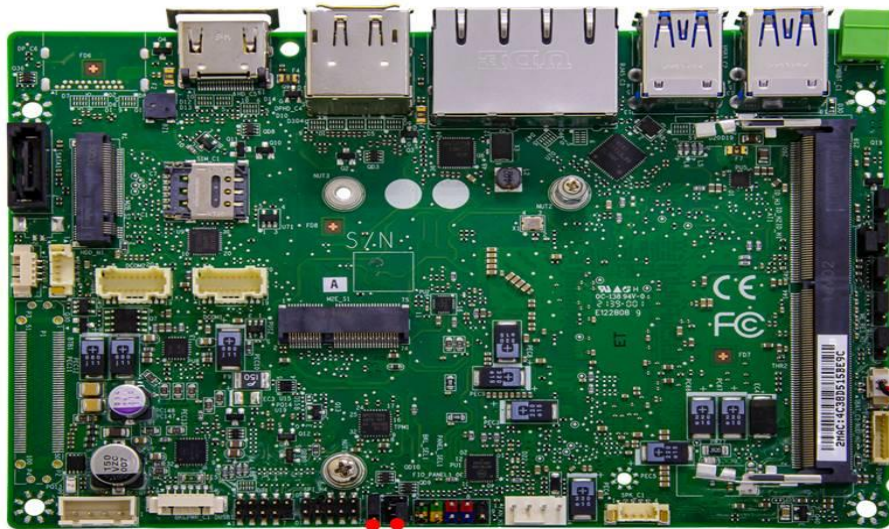
PIN	DEFINITION
Pin1/Pin2 (default) : Keep current BIOS setting	<p>PIN1 PIN2 PIN3</p>
Pin2/Pin3 : BIOS will be cleared to the default setting	<p>PIN1 PIN2 PIN3</p>

OXY5363A User's Manual

Revision Date: March 18, 2022

ME Clear

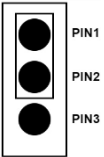
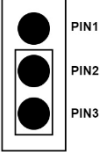
PIN	DEFINITION
Pin1/Pin2 (default) : Keep current ME setting	
Pin2/Pin3 : Intel ME will be cleared to the default setting	



LVDS Backlight Power Selection
(PIN 1~PIN3)

LVDS Panel Power Selection
(PIN1~PIN6)

LVDS Backlight Power Selection Header

PIN	DEFINITION
Pin1-Pin2(default) : Backlight power 5V support	
Pin2-Pin3 : Backlight power 12V support	

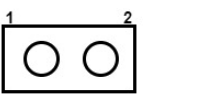
LVDS Panel Power Selection Header

PIN	DEFINITION
Pin4-Pin6(default) Panel power 5V support	
Pin2-Pin4 Panel power 3.3V support	
Pin3-Pin4 Panel power 12V support	

2.3 Internal Connector Pin Define


RTC Battery Socket

PIN	DEFINITION
1	VBAT
2	GND




Audio Socket

PIN	DEFINITION
1	HPOUT_JD
2	HP_LOUT_R
3	HP_LOUT_L
4	RING2
5	N/A
6	SLEEVE
7	AGND
8	AGND



peaker Socket

PIN	DEFINITION
1	LINE OUT L-
2	LINE OUT L+
3	LINE OUT R-
4	LINE OUT R+

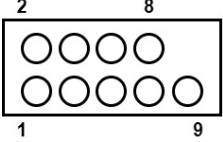


OXY5363A User's Manual

Revision Date: March 18, 2022


Front I/O Header

PIN	DEFINITION
1	HDD LED+
2	Power LED+(S0)
3	HDD LED-
4	Power LED-(S3)
5	GND
6	PWRBT_N
7	PWSET_N
8	GND
9	VCC(5V)




Panel Backlight Power Socket (Support 5V)

PIN	DEFINITION
1	LVDS_BKTEN
2	BKLT_CTRL
3	BKLT_PWR(5V or 12V)
4	BKLT_PWR(5V or 12V)
5	GND
6	GND



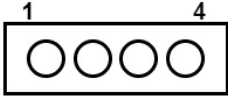
DC Input Socket

PIN	DEFINITION
1	GND
2	DC_IN(8-24V)
3	DC_IN(8-24V)
4	GND




Output Power Connector

PIN	DEFINITION
1	N/A
2	GND
3	5V/1A
4	12V/1A



SATA SSD Power Connector

PIN	DEFINITION
1	V_3P3_SATA
2	GND
3	V_5P0_SATA
4	V_12P0_SATA

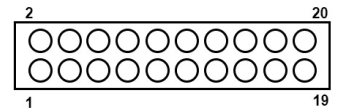


OXY5363A User's Manual

Revision Date: March 18, 2022

Dual COM Port Connector DCOM1

PIN	DEFINITION		
	RS232	RS422	RS485
1	NDCD1(TX-)(D-)	TX-	D-
2	NRX1(TX+)(D+)	TX+	D+
3	NTX1(RX+)	RX+	N/A
4	NDTR1(RX-)	RX-	N/A
5	GND	GND	GND
6	NDSR1	N/A	N/A
7	NRTS1	N/A	N/A
8	NCTS1	N/A	N/A
9	NRI1	N/A	N/A
10	N/A	N/A	N/A
11	NDCD2	N/A	N/A
12	NRX2	N/A	N/A
13	NTX2	N/A	N/A
14	NDTR2	N/A	N/A
15	GND	N/A	N/A
16	NDSR2	N/A	N/A
17	NRTS2	N/A	N/A
18	NCTS2	N/A	N/A
19	NRI2	N/A	N/A
20	N/A	N/A	N/A

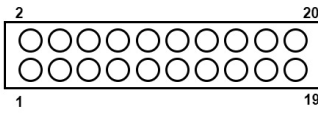


OXY5363A User's Manual

Revision Date: March 18, 2022

Dual COM Port Connector DCOM2

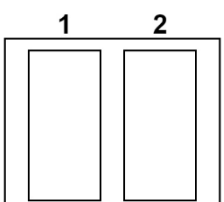
PIN	DEFINITION
	RS232
1	NDCD3
2	NRX3
3	NTX3
4	NDTR3
5	GND
6	NDSR3
7	NRTS3
8	NCTS3
9	NRI3
10	N/A
11	NDCD4
12	NRX4
13	NTX4
14	NDTR4
15	GND
16	NDSR4
17	NRTS4
18	NCTS4
19	NRI4
20	N/A



2.4 External Connector Pin Define

Dual COM Port Connector DCOM2

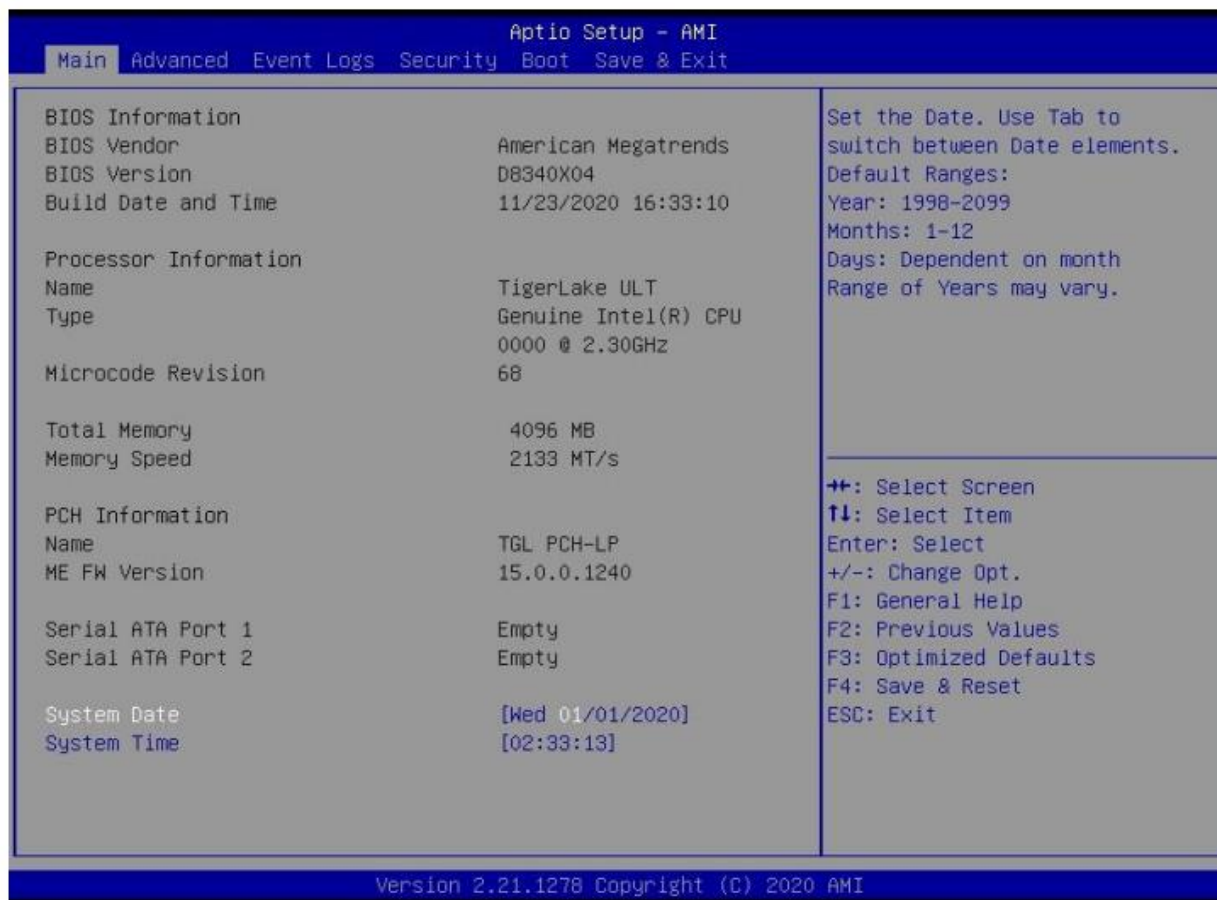
PIN	DEFINITION
1	GND
2	PWRBT_N



Chapter 3: BIOS SETUP

This chapter provides information about how to set up BIOS and use BIOS menu items to adjust basic function settings.

3.1 Main Page



Field Name	BIOS Vendr
Default Value	American Megatrends
Comment	This field is not selectable. There is no help text associated with it.

Field Name	BIOS Version
Default Value	Display the version of the BIOS
Comment	This field is not selectable. There is no help text associated with it

OXY5363A User's Manual

Revision Date: March 18, 2022

Field Name	Build Date and Time
Default Value	Display build date of the BIOS
Comment	This field is not selectable. There is no help text associated with it.

Field Name	Processor Information
Default Value	Display build date of the BIOS
Comment	This field is not selectable. There is no help text associated with it.

Field Name	Processor Information
Default Value	Display the installed CPU brand.
Comment	This field is not selectable. There is no help text associated with it.

Field Name	Microcode Version
Default Value	Display the CPU microcode revision.
Comment	This field is not selectable. There is no help text associated with it.

Field Name	Total Memory
Default Value	Display the installed memory size.
Comment	This field is not selectable. There is no help text associated with it.

Field Name	Memory Speed
Default Value	Display the installed memory Frequency
Comment	This field is not selectable. There is no help text associated with it.

Field Name	PCH Information
Default Value	Display PCH family
Comment	This field is not selectable. There is no help text associated with it.

Field Name	ME FW Version
Default Value	ME Firmware Version.
Comment	This field is not selectable. There is no help text associated with it

Field Name	Serial ATA Port 1
Default Value	Display the installed SATA device model/size of port 1
Comment	This field is not selectable. There is no help text associated with it.

OXY5363A User's Manual

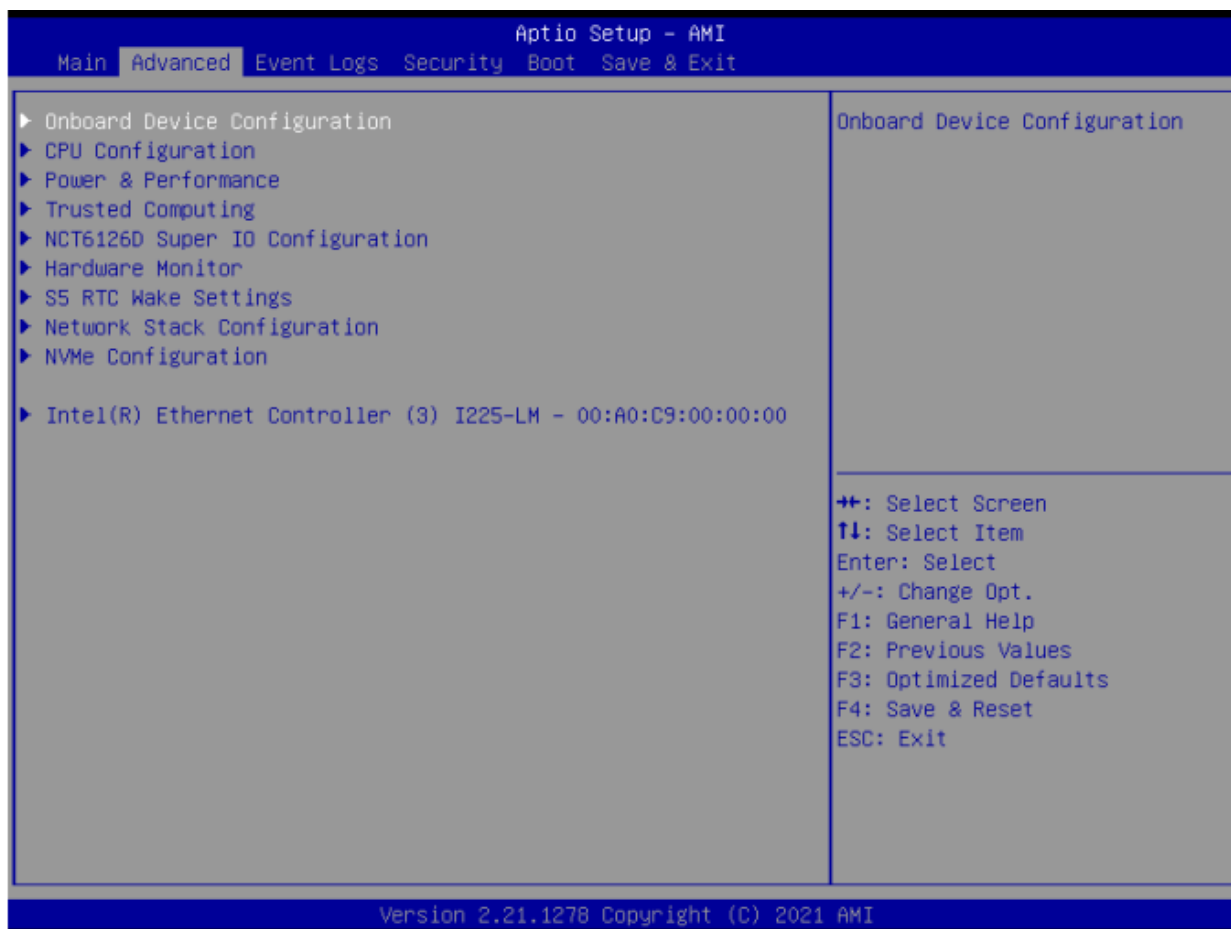
Revision Date: March 18, 2022

Field Name	Serial ATA Port 2
Default Value	Display the installed SATA device model/size of port 2
Comment	This field is not selectable. There is no help text associated with it.

Field Name	System Date
Default Value	[Www mm/dd/yyyy]
Possible Value	Www : Mon/Tue/Wed/Thu/Fri/Sat/Sun mm : 1-12 dd : 1-31 yyyy : 1998-2099
Help	Set the Date. Use Tab to switch between Date elements. Default Rangers Year : 1998-2099 Months : 1-12 Days : Dependent on month Range of Years may vary

Field Name	System Time
Default Value	[hh :mm :ss]
Possible Value	hh : 0-23 mm : 0-59 ss : 0-59
Help	Set the Time. Use Tab to switch between Time elements.

3.2 Advanced Page



Field Name	Onboard Device
Help	Onboard Device Configuration
Comment	Press Enter when selected to go into the associated Sub-Menu.

Field Name	CPU Configuration
Help	CPU Configuration Parameters
Comment	Press Enter when selected to go into the associated Sub-Menu.

Field Name	Power & Performance
Help	Power & Performance Options.
Comment	Press Enter when selected to go into the associated Sub-Menu.

OXY5363A User's Manual

Revision Date: March 18, 2022

Field Name	Trusted Computing
Help	Trusted Computing Settings
Comment	Press Enter when selected to go into the associated Sub-Menu.

Field Name	NCT6126D Super IO Configuration
Help	System Super IO Chip Parameters.
Comment	Press Enter when selected to go into the associated Sub-Menu.

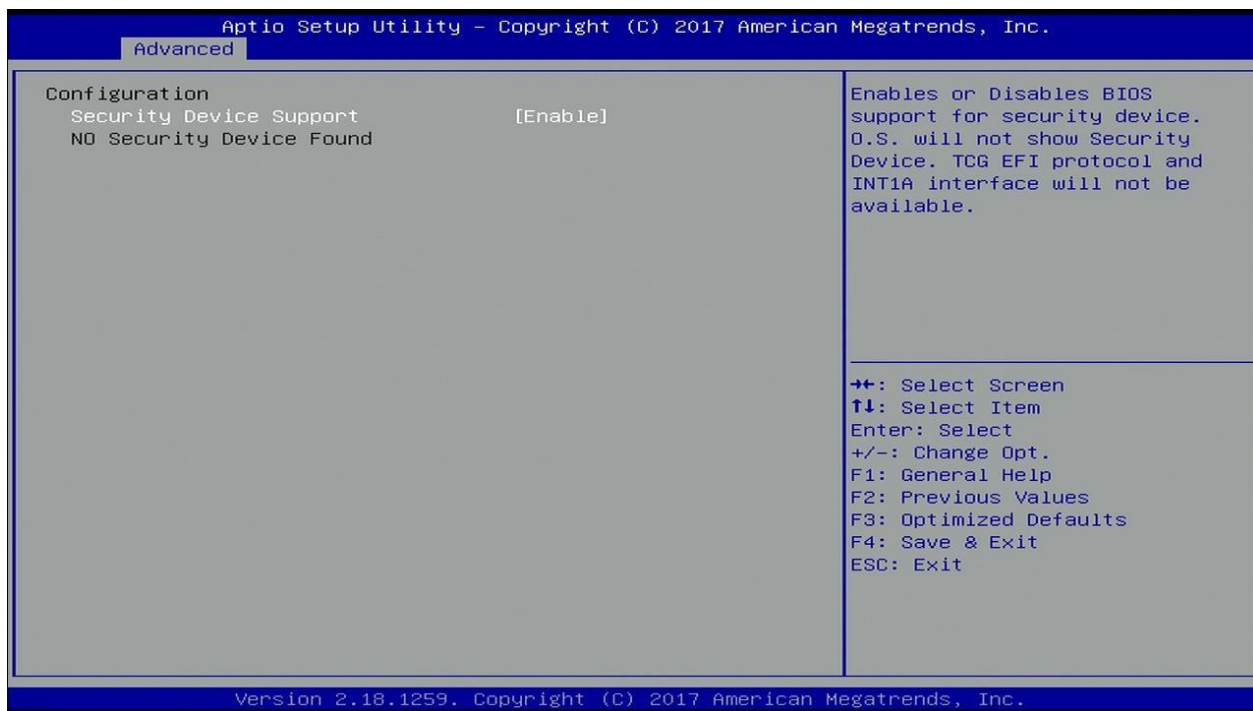
Field Name	HW Monitor
Help	Monitor hardware status
Comment	Press Enter when selected to go into the associated Sub-Menu.

Field Name	S5 RTC Wake Settings
Help	Enable system to wake from S5 using RTC alarm
Comment	Press Enter when selected to go into the associated Sub-Menu.

Field Name	Network Stack Configuration
Help	Network Stack Settings.
Comment	Press Enter when selected to go into the associated Sub-Menu.

Field Name	NVMe Configuration
Help	NVMe Device Options Settings
Comment	Press Enter when selected to go into the associated Sub-Menu.

3.2.1 Onboard Device



Field Name	Turbo Mode
Default Value	[Enabled]
Possible Value	Enabled Disabled
Help	Enable/Disable processor Turbo Mode (requires EMTTM enabled too)

Field Name	State After G3
Default Value	[S5 State]
Possible Value	S0 State S5 State
Help	Specify what state to go to when power is re-applied after a power failure (G3 state).

Field Name	DVMT Pre-Allocated
Default Value	[64M]
Possible Value	64M 32M/F7 36M 40M

OXY5363A User's Manual

Revision Date: March 18, 2022

	44M 48M 52M 56M 60M
Help	Select DVMT 5.0 Pre-Allocated (Fixed) Graphics Memory size used by the Internal Graphics Device.

Field Name	DVMT Total Gfx Mem
Default Value	[256M]
Possible Value	128M 256M MAX
Help	Select DVMT5.0 Total Graphic Memory size used by the Internal Graphics Device.

Field Name	Wake on LAN Enable
Default Value	[Enabled]
Possible Value	Enabled Disabled
Help	Enable/Disable integrated LAN to wake the system.

Field Name	HD Audio
Default Value	[Enabled]
Possible Value	Enabled Disabled
Help	Control Detection of the HD-Audio device. Disabled = HDA will be unconditionally disabled. Enabled = HDA will be unconditionally enabled.

Field Name	ME Update
Default Value	[Disabled]
Possible Value	Enabled Disabled
Help	Temporary disable Intel CSME for ME FW Update. Enabled = Intel CSME disabled after first time reboot only

OXY5363A User's Manual

Revision Date: March 18, 2022

Note: Visible in LVDS SKU.

Field Name	LVDS Interface Type
Default Value	[Disabled]
Possible Value	8 bit-VESA Single Channel 8 bit-VESA Dual Channel 6 bit-VESA Single Channel 6 bit-VESA Dual Channel 8 bit-JEIDA Single Channel 8 bit-JEIDA Dual Channel
Help	Sets LVDS connectivity.

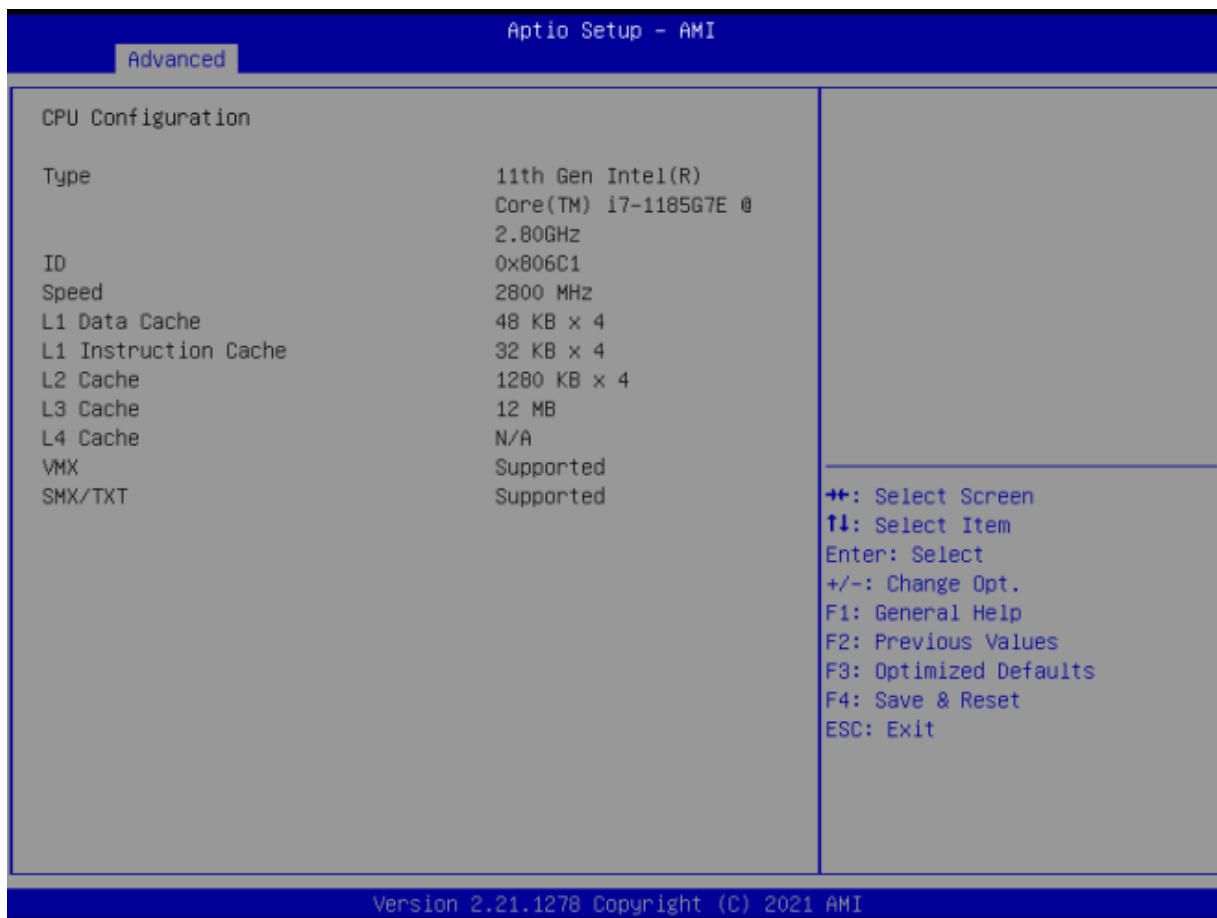
Note: Visible when LVDS Interface Type not set to disable

Field Name	LVDS Interface Type
Default Value	[1920x1080 LVDS]
Possible Value	1024x768 LVDS 1366x768 LVDS 1920x1080 LVDS
Help	Select LVDS panel used by Internal Graphics Device by selecting the appropriate setup item.

Field Name	TPM Device Selection
Default Value	[dTPM]
Possible Value	PTT dTPM
Help	Selects TPM device: PTT or dTPM. PTT - Enables PTT in SkuMgr dTPM 1.2 - Disables PTT in SkuMgr Warning ! PTT/dTPM will be disabled and all data saved on it will be lost

Field Name	G-Sensor Enable/Disable
Default Value	[Disabled]
Possible Value	Enabled Disabled
Help	MS-26CAD-T10 G sensor on/off Notice : If Gsensor enabled will reserve 2 pin from DIO

3.2.2 CPU Configuration



Field Name	Type
Default Value	[Intel CPU Brand String]
Comment	This field is not selectable. There is no help text associated with it.

Field Name	ID
Default Value	Displays CPU Signature
Comment	This field is not selectable. There is no help text associated with it.

Field Name	Speed
Default Value	Displays the CPU Speed
Comment	This field is not selectable. There is no help text associated with it.

OXY5363A User's Manual

Revision Date: March 18, 2022

Field Name	L1 Data Cache
Default Value	L1 Data Cache Size
Comment	This field is not selectable. There is no help text associated with it.

Field Name	L1 Instruction Cache
Default Value	L1 Instruction Cache Size
Comment	This field is not selectable. There is no help text associated with it.

Field Name	L2 Cache
Default Value	L2 Cache Size
Comment	This field is not selectable. There is no help text associated with it.

Field Name	L3 Cache
Default Value	L3 Cache Size
Comment	This field is not selectable. There is no help text associated with it.

Field Name	L4 Cache
Default Value	L4 Cache Size
Comment	This field is not selectable. There is no help text associated with it.

Field Name	VXM
Default Value	L3 Cache Size
Comment	This field is not selectable. There is no help text associated with it.

Field Name	SMX/TXT
Default Value	SMX/TXT Supported or Not
Comment	This field is not selectable. There is no help text associated with it.

3.2.3 Trusted Computing



Field Name	Firmware Version
Default Value	TPM module version.
Comment	This field is not selectable. There is no help text associated with it.

Field Name	Vendor
Default Value	TPM module vendor name.
Comment	This field is not selectable. There is no help text associated with it.

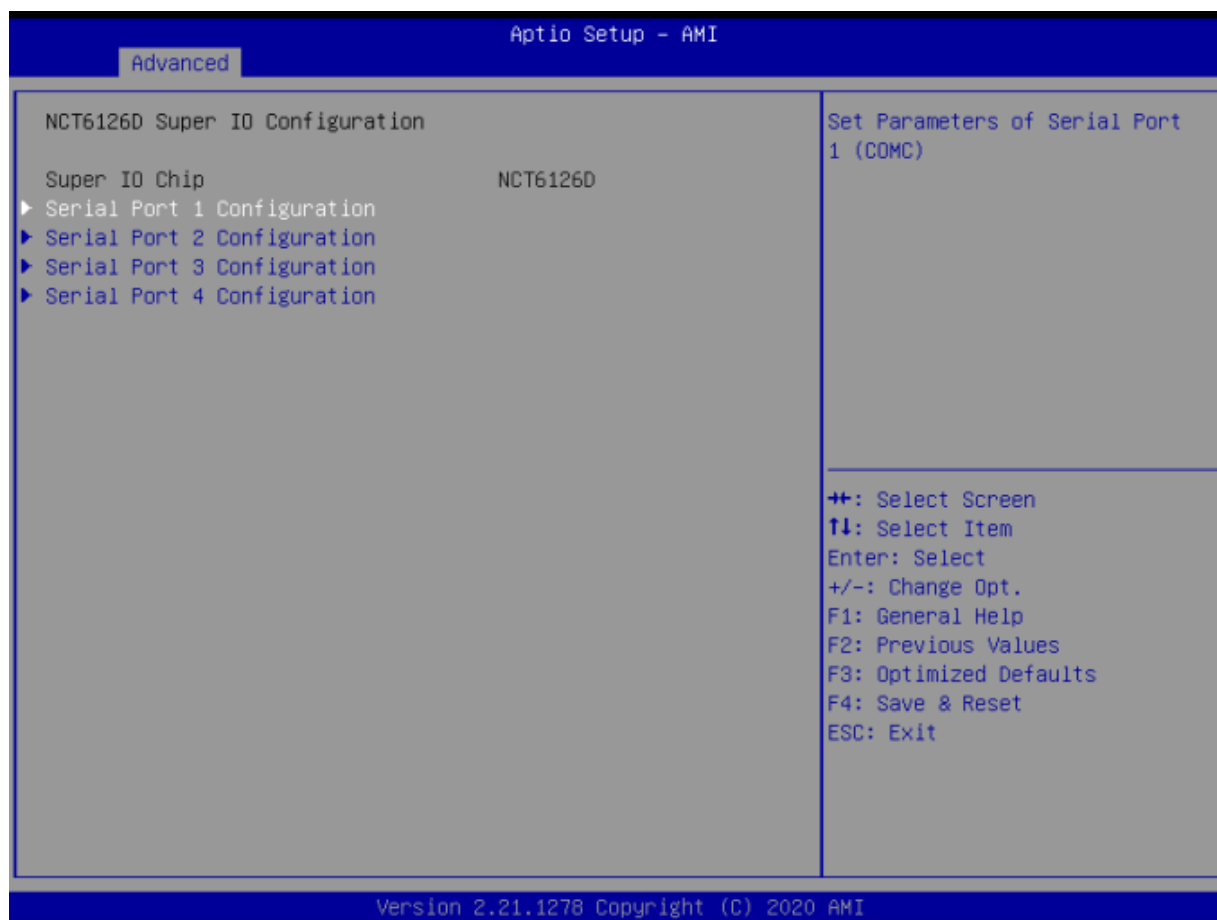
OXY5363A User's Manual

Revision Date: March 18, 2022

Field Name	Security Device Support
Default Value	[Enable]
Possible Value	Enable Disable
Help	Enables or Disables BIOS support for security device. O.S. will not show Security Device. TCG EFI protocol and INT1A interface will not be available.

Field Name	Pending operation
Default Value	[None]
Possible Value	None TPM Clear
Help	Schedule an Operation for the Security Device. NOTE: Your Computer will reboot during restart in order to change State of Security Device.

3.2.4 NCT6126D Super IO Configuration



OXY5363A User's Manual

Revision Date: March 18, 2022

Field Name	Serial Port 1 Configuration
Help	Set Parameters of Serial Port 1 (COMC)
Comment	Press Enter when selected to go into the associated Sub-Menu.

Field Name	Serial Port 2 Configuration
Help	Set Parameters of Serial Port 2 (COMD)
Comment	Press Enter when selected to go into the associated Sub-Menu.

Field Name	Serial Port 3 Configuration
Help	Set Parameters of Serial Port 3 (COME)
Comment	Press Enter when selected to go into the associated Sub-Menu.

Field Name	Serial Port 4 Configuration
Help	Set Parameters of Serial Port 4 (COMA)
Comment	Press Enter when selected to go into the associated Sub-Menu.

3.2.5 Serial Port 1 Configuration



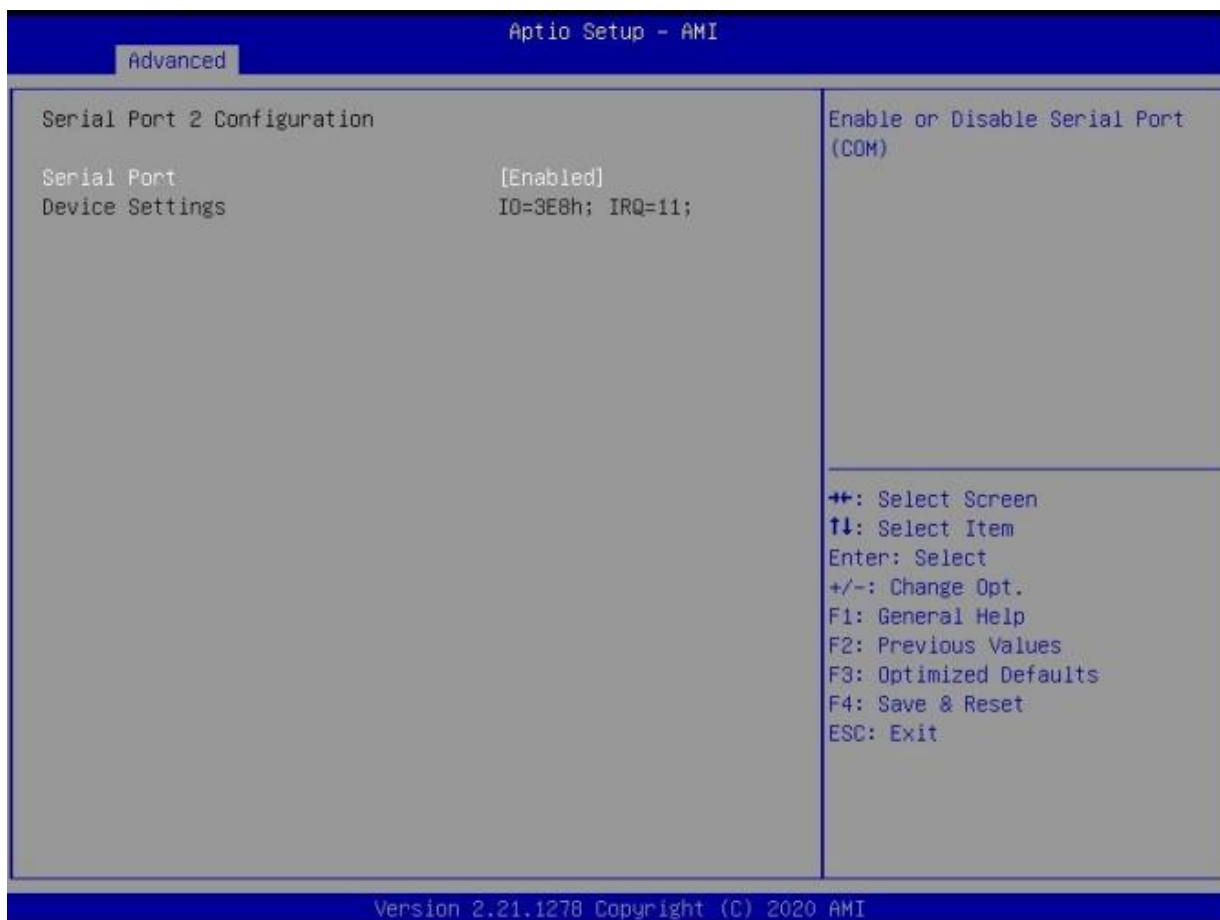
Field Name	Serial Port
Default Value	[Enabled]
Possible Value	Disabled Enabled
Help	Enable or Disable Serial Port(COM)

Field Name	Device Settings
Default Value	Device Super IO COM1 Address and IRQ.
Comment	This field is not selectable. There is no help text associated with it.

Field Name	Serial Port
Default Value	[3T/5R RS232]
Possible Value	1T/1R RS422 3T/5R RS232

	1T/1R RS485 TX ENABLE Low Active 1T/1R RS422 with termination resistor 1T/1R RS485 with termination resistor TX ENABLE Low Active Disabled
Help	Configure serial port as RS232/RS422/RS485.

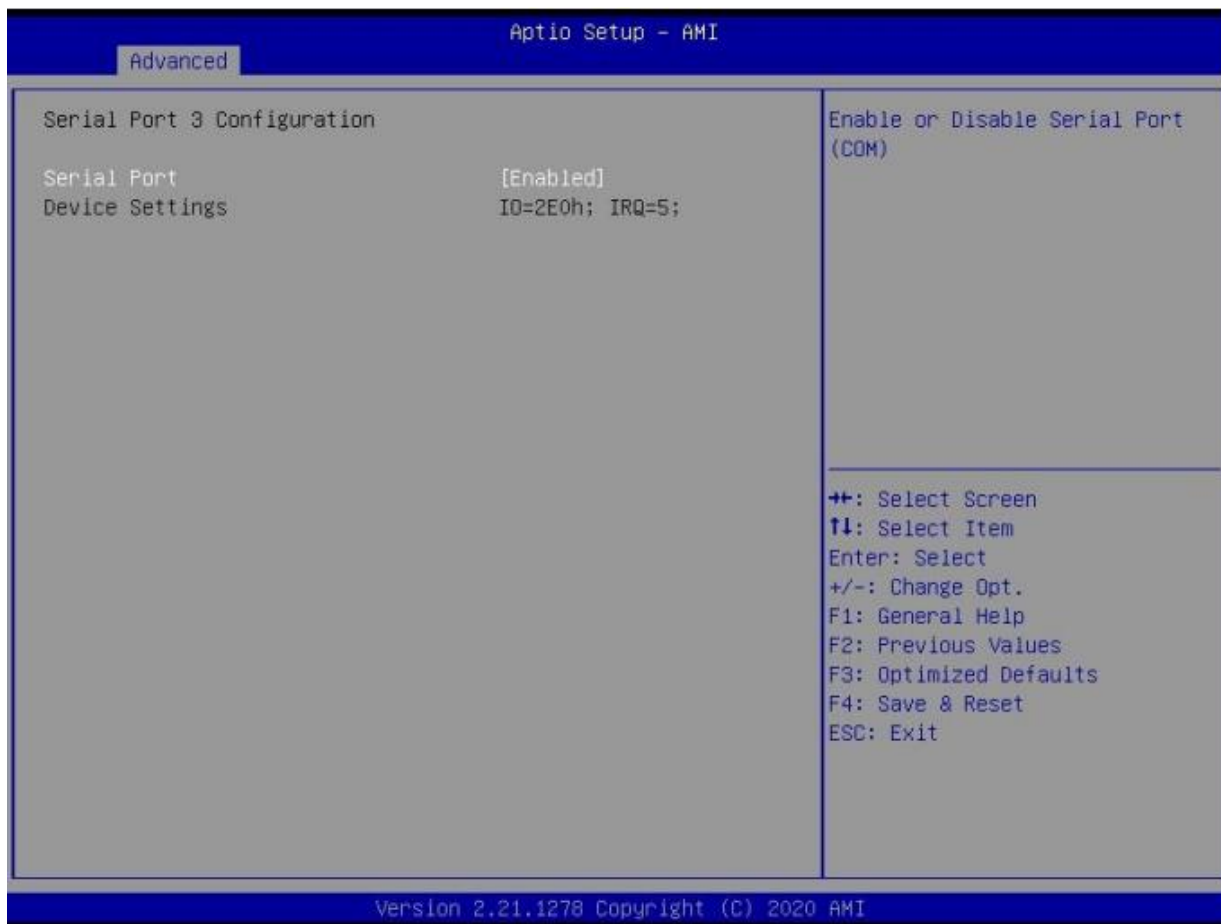
3.2.6 Serial Port 2 Configuration



Field Name	Serial Port
Default Value	[Enabled]
Possible Value	Disabled Enabled
Help	Enable or Disable Serial Port(COM)

Field Name	Device Settings
Default Value	Device Super IO COM2 Address and IRQ.
Comment	This field is not selectable. There is no help text associated with it.

3.2.7 Serial Port 3 Configuration



Field Name	Serial Port
Default Value	[Enabled]
Possible Value	Disabled Enabled
Help	Enable or Disable Serial Port(COM)

Field Name	Device Settings
Default Value	Device Super IO COM3 Address and IRQ.
Comment	This field is not selectable. There is no help text associated with it.

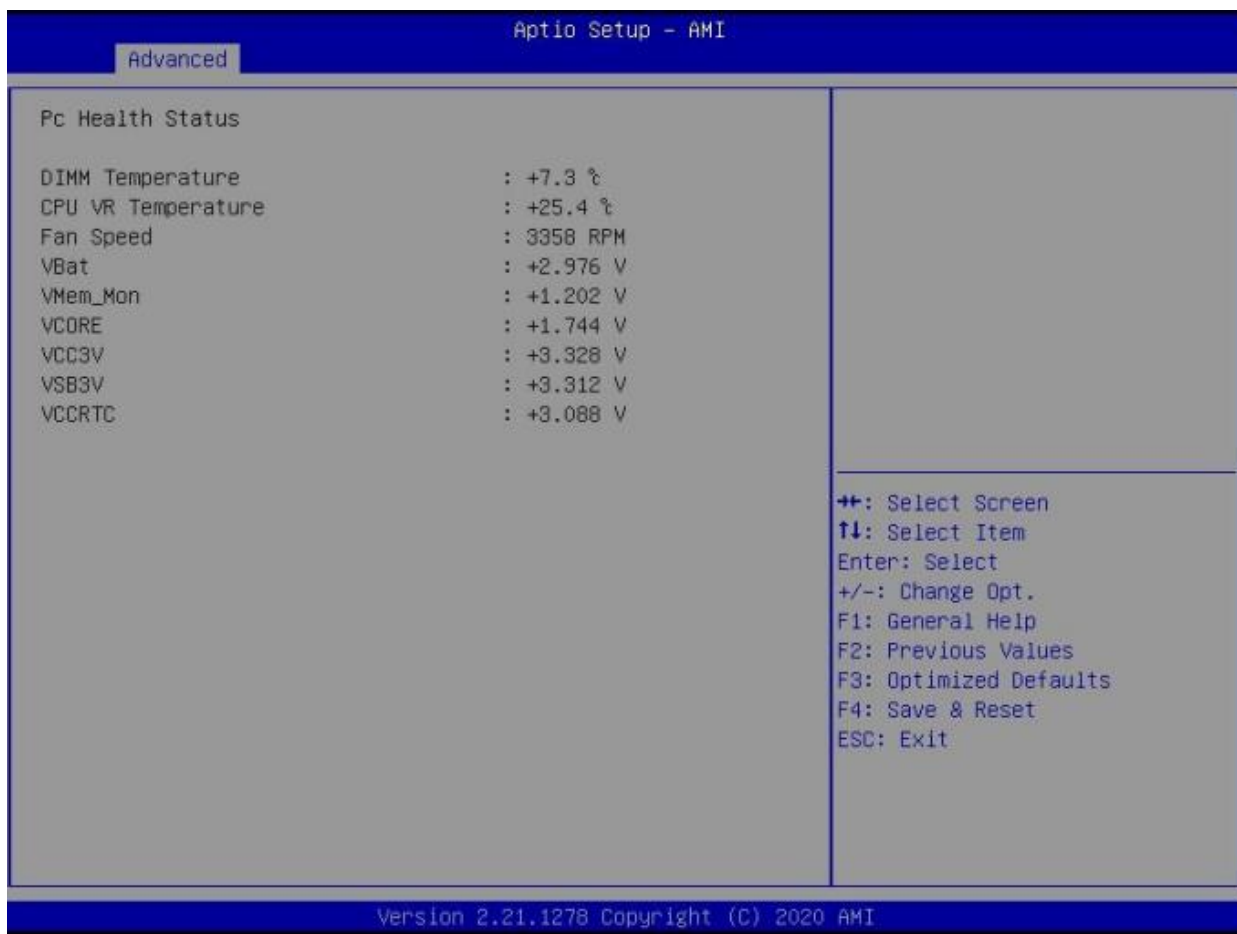
3.2.8 Serial Port 4 Configuration



Field Name	Serial Port
Default Value	[Enabled]
Possible Value	Disabled Enabled
Help	Enable or Disable Serial Port(COM)

Field Name	Device Settings
Default Value	Device Super IO COM4 Address and IRQ.
Comment	This field is not selectable. There is no help text associated with it.

3.2.9 Hardware Monitor



Field Name	Serial Port
DIMM Temperature	+70~-40°C
CPU VR Temperature	+70~-40°C
Fan Speed	There are many kinds of the fan could be installed into the system, so we could only set 0 RPM for the failed fan speed, and there is also no high RPM limitation.
VBat	2.0~ 3.65V
VMem_Mon	1.15 ~ 1.25V
VCORE	0 ~2V
VCC3V	3.13 ~ 3.65V
VSB3V	3.13 ~ 3.65V
VCCRTC	2.0 ~ 3.2V

3.2.10 RTC Wake Settings



Field Name	Wake system from S5
Default Value	[Disabled]
Possible Value	Disabled Fixed Time
Help	Enable or disable System wake on alarm event, Select FixedTime, system will wake on the hr::min::sec specified.

Field Name	Wake up hour(Show when Wake system from S5 set to Fixed Time)
Default Value	0
Possible Value	0-23
Help	Select 0-23 For example enter 3 for 3am and 15 for 3pm

OXY5363A User's Manual

Revision Date: March 18, 2022

Field Name	Wake up hour(Show when Wake system from S5 set to Fixed Time)
Default Value	0
Possible Value	0-9
Help	Select 0-59 For Minute

Field Name	Wake up hour(Show when Wake system from S5 set to Fixed Time)
Default Value	0
Possible Value	0-9
Help	Select 0-59 For Second

3.2.11 Networks Stack Configuration



Field Name	Network stack
Default Value	[Disabled]
Possible Value	Disabled Fixed Time
Help	Enable/Disable UEFI Network stack.

Field Name	Ipv4 PXE Support (Available when Network stack Enabled)
Default Value	[Enabled]
Possible Value	Disabled Fixed Time
Help	Enable/Disable Ipv4 PXE Boot Support. If disabled IPV4 PXE boot support will not be available.

Field Name	Ipv6 PXE Support (Available when Network stack Enabled)
Default Value	[Enabled]
Possible Value	Disabled Fixed Time
Help	Enable/Disable Ipv6 PXE Boot Support. If disabled IPV6 PXE boot support will not be available.

3.2.12 NVMe Configuration



Field Name	Device
Comment	Press Enter when selected to go into the associated Sub-Menu.

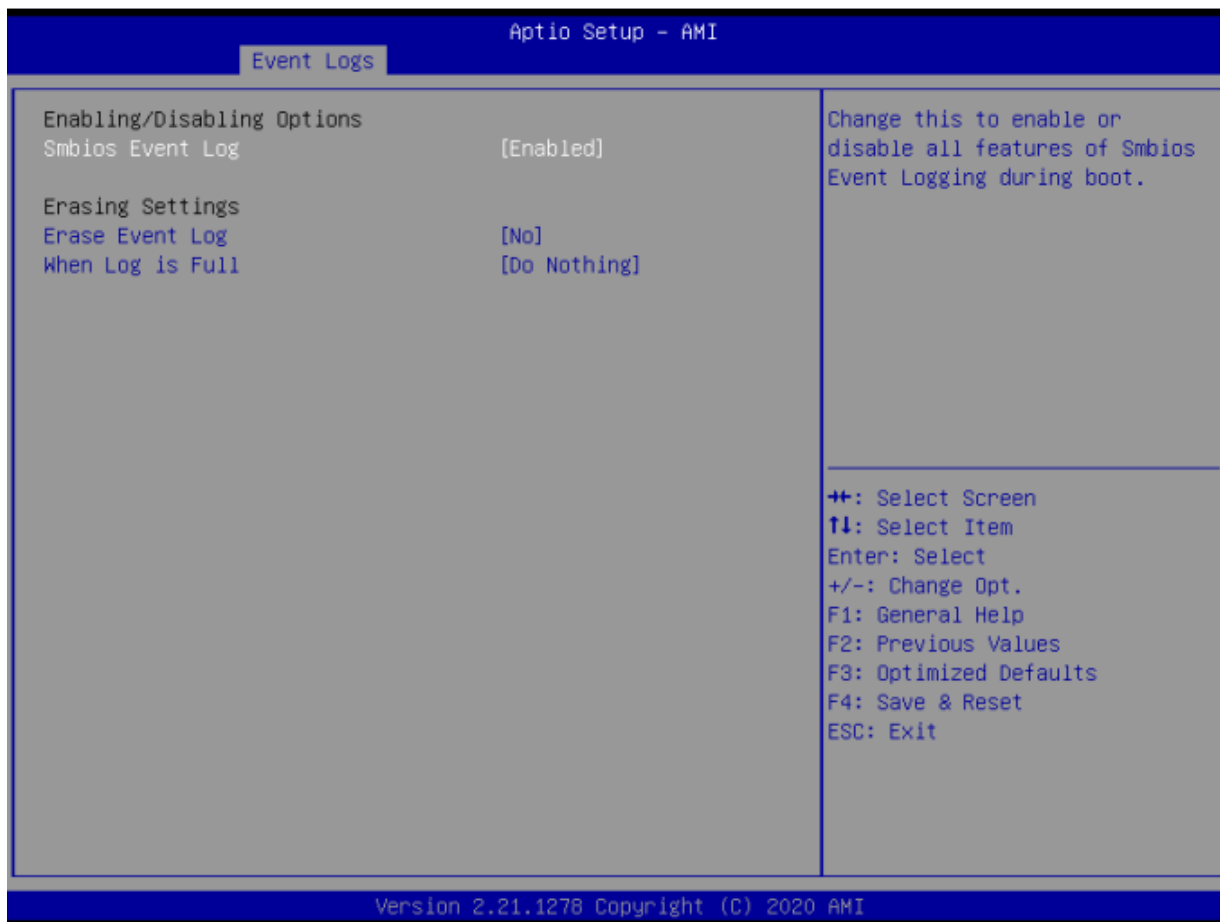
3.3 Event Logs



Field Name	Change Smbios Event Log Settings
Help	Press to change the Smbios Event Log configuration.
Comment	Press Enter when selected to go into the associated Sub-Menu.

Field Name	View Smbios Event Log
Help	Press to view the Smbios Event Log records.
Comment	Press Enter when selected to go into the associated Sub-Menu.

3.3.1 Enabling/Disabling Options

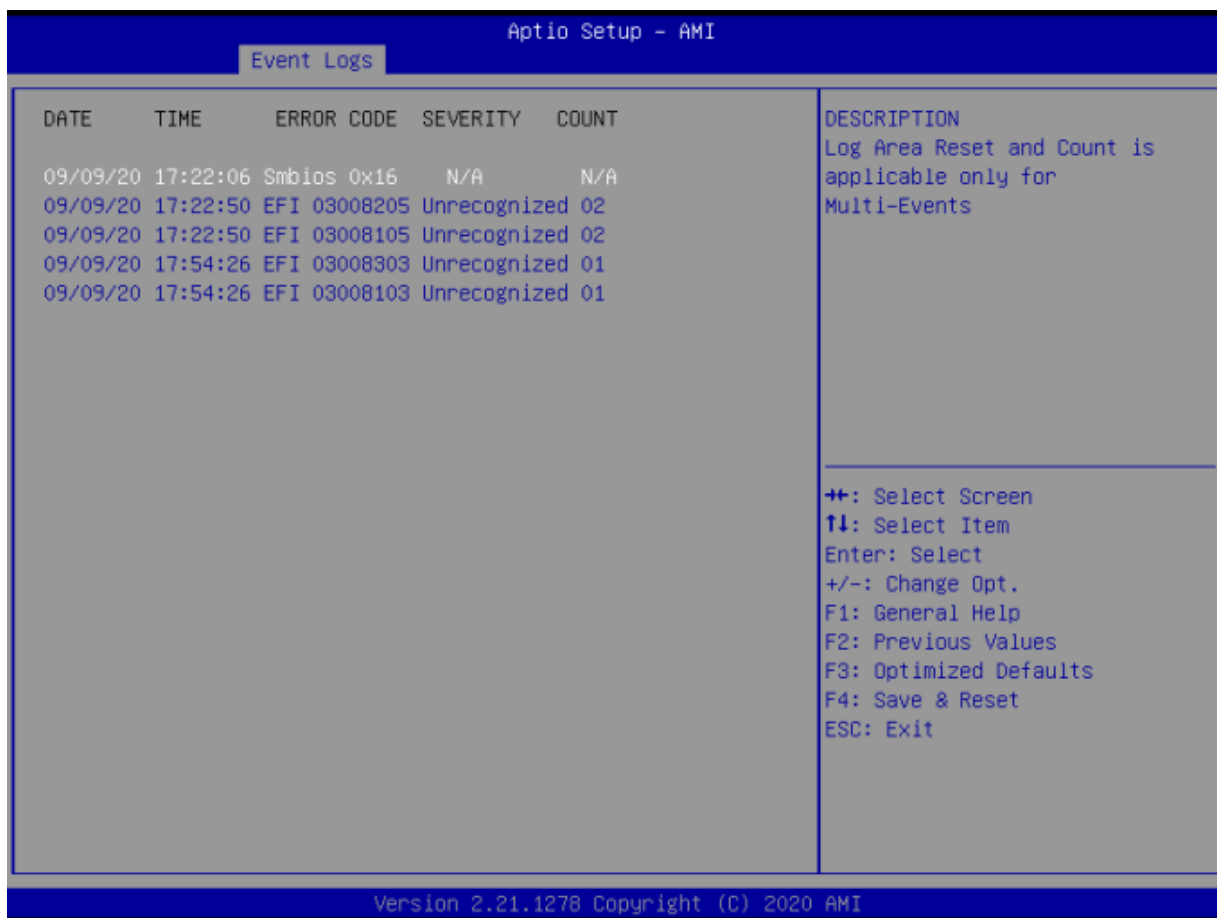


Field Name	Ipv6 PXE Support (Available when Network stack Enabled)
Default Value	[Enabled]
Possible Value	Disabled Fixed Time
Help	Change this to enable or disable all features of Smbios Event Logging during boot.

Field Name	Erase Event Log
Default Value	[No]
Possible Value	No Yes, Next reset Yes, Every reset
Help	Choose options for erasing Smbios Event Log. Erasing is done prior to any logging activation during reset.

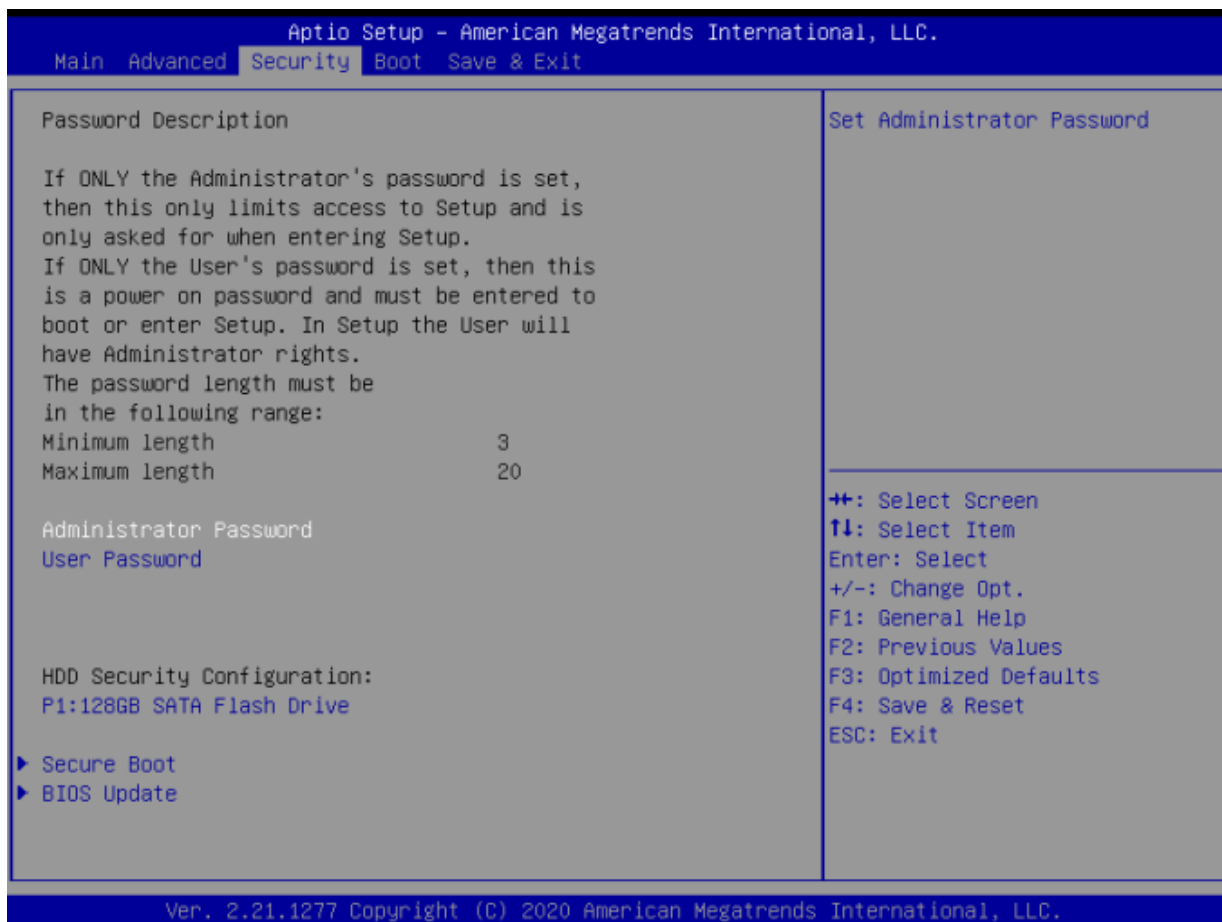
Field Name	When Log is Full
Default Value	[Do Nothing]
Possible Value	Do Nothing Erase Immediately
Help	Choose options for reactions to a full Smbios Event Log

3.3.2 View Smbios Event logs



Field Name	DATE / TIME / ERROR CODE / SEVERITY / COUNT
Default Value	MM/DD/YY HH:MM:SS Smbios 0x16 N/A N/A
Possible Value	By Events.
Help	By Events.

3.4 Security Page



Field Name	Administrator Password
Help	Set Administrator Password

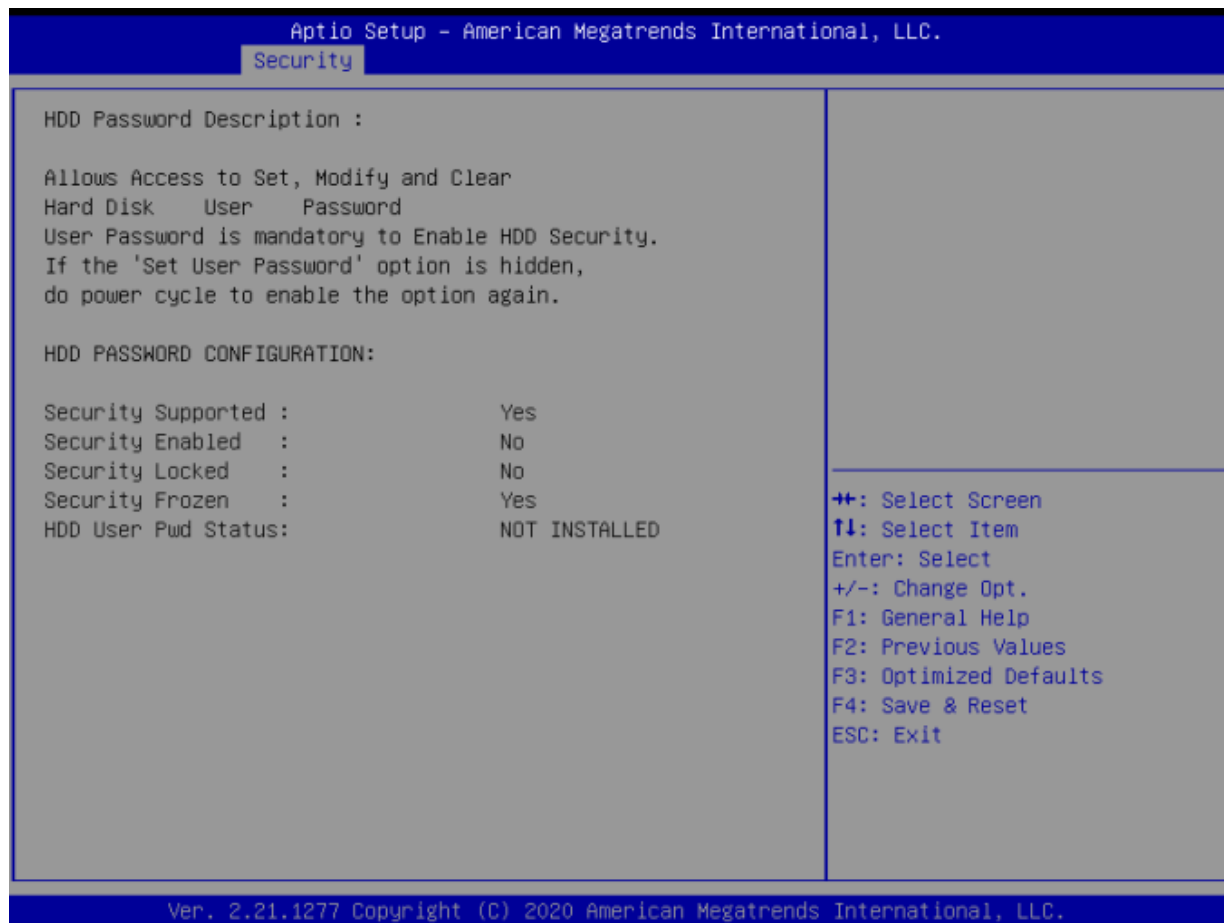
Field Name	User Password
Help	Set User Password.

Field Name	HDD Security drive
Help	HDD Security Configuration for selected drive
Comment	Press Enter when selected to go into the associated Sub-Menu.

Field Name	Secure Boot
Help	Secure Boot Configuration
Comment	Press Enter when selected to go into the associated Sub-Menu.

Field Name	BIOS Update
Help	BIOS Update support
Comment	Press Enter when selected to go into the associated Sub-Menu.

3.4.1 HDD Security



Field Name	Set User Password
Help	Set HDD User Password. *** Advisable to Power Cycle System after Setting Hard Disk Passwords ***.Discard or Save changes option in setup does not have any impact on HDD when password is set or removed. If the 'Set HDD User Password' option is hidden, do power cycle to enable the option again

3.4.2 Secure Boot



Field Name	Secure Boot
Default Value	[Enabled]
Possible Value	Enabled Disabled
Help	Secure Boot feature is Active if Secure Boot is Enabled, Platform Key(PK) is enrolled and the System is in User mode. The mode change requires platform reset

Field Name	Secure Boot Mode
Default Value	[Enabled]
Possible Value	Enabled Disabled
Help	Secure Boot feature is Active if Secure Boot is Enabled, Platform Key(PK) is enrolled and the System is in User mode. The mode change requires platform reset

OXY5363A User's Manual

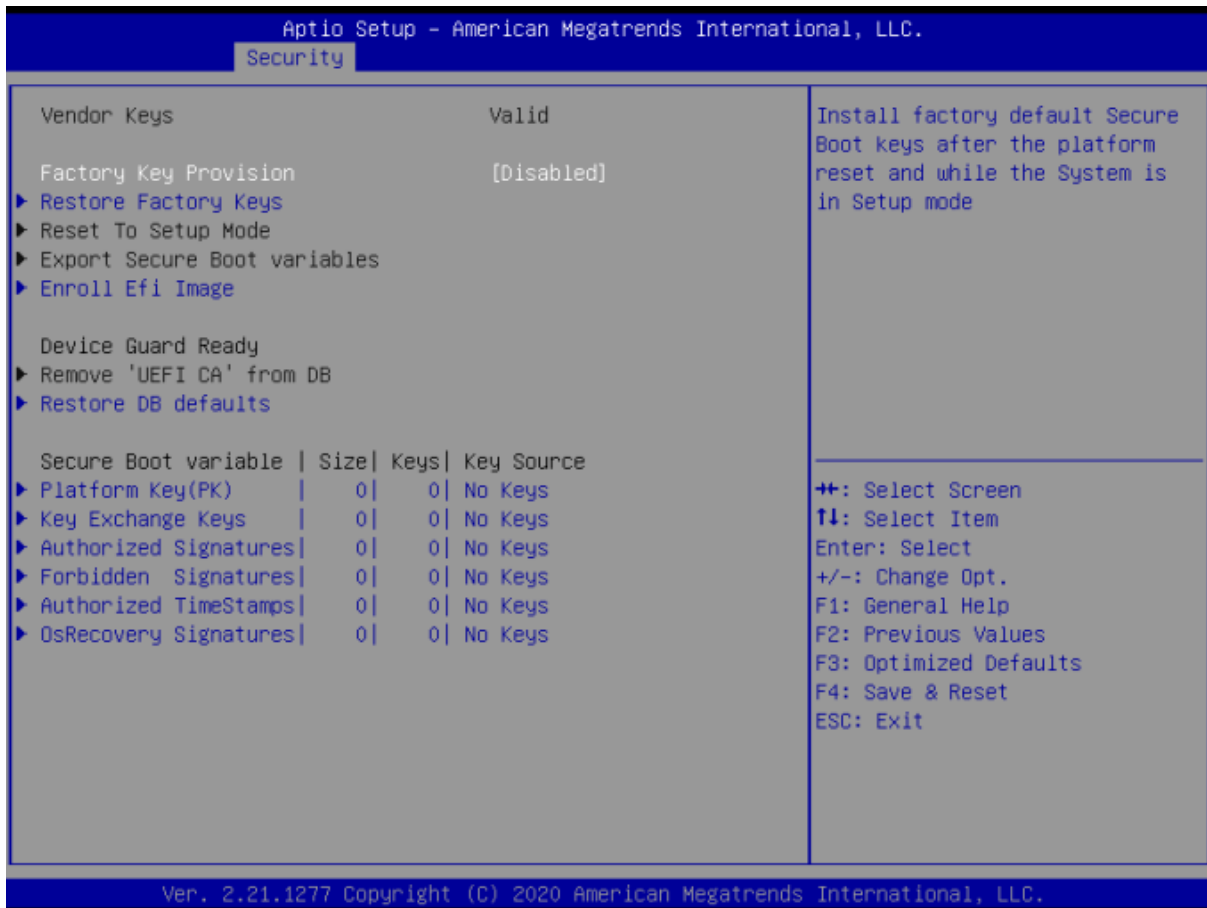
Revision Date: March 18, 2022

Field Name	Restore Factory Keys (Secure Boot Mode set to Custom)
Help	Force System to User Mode. Install factory default Secure Boot key databases

Field Name	Reset to Setup Mode(After Restore Factory keys Provision)
Help	Delete all Secure Boot key databases from NVRAM

Field Name	Key Management
Help	Enables expert users to modify Secure Boot Policy variables without full authentication
Comment	Enables expert users to modify Secure Boot Policy variables without full authentication

3.4.3 Key Management (Secure Boot Mode set to Custom)



OXY5363A User's Manual

Revision Date: March 18, 2022

Field Name	Factory Key Provision
Default Value	[Disabled]
Possible Value	Enabled Disabled
Help	Install factory default Secure Boot keys after the platform reset and while the System is in Setup mode

Field Name	Restore Factory Keys
Help	Force System to User Mode. Install factory default Secure Boot key databases

Field Name	Reset to Setup Mode
Help	Delete all Secure Boot key databases from NVRAM

Field Name	Export Secure Boot variables
Help	Copy NVRAM content of Secure Boot variables to files in a root folder on a file system device

Field Name	Enroll Efi Image
Help	Allow the image to run in Secure Boot mode. Enroll SHA256 Hash certificate of a PE image into Authorized Signature Database (db)

Field Name	Remove 'UEFI CA' from DB
Help	Device Guard ready system must not list 'Microsoft UEFI CA' Certificate in Authorized Signature database (db)

Field Name	Restore DB defaults
Help	Restore DB variable to factory defaults

OXY5363A User's Manual

Revision Date: March 18, 2022

Field Name	Platform Key (PK)
Default Value	Size:0, Keys:0, Key source: No Keys
Help	Enroll Factory Defaults or load certificates from a file: 1.Public Key Certificate: a)EFI_SIGNATURE_LIST b)EFI_CERT_X509 (DER) c)EFI_CERT_RSA2048 (bin) d)EFI_CERT_SHAXXX 2.Authenticated UEFI Variable 3.EFI PE/COFF Image(SHA256) Key Source: Factory,External,Mixed
Comment	Press Enter when selected to go into the associated Sub-Menu "Key Management".

Field Name	Key Exchange Keys
Default Value	Size:0, Keys:0, Key source: No Keys
Help	Enroll Factory Defaults or load certificates from a file: 1.Public Key Certificate: a)EFI_SIGNATURE_LIST b)EFI_CERT_X509 (DER) c)EFI_CERT_RSA2048 (bin) d)EFI_CERT_SHAXXX 2.Authenticated UEFI Variable 3.EFI PE/COFF Image(SHA256) Key Source: Factory,External,Mixed
Comment	Press Enter when selected to go into the associated Sub-Menu.

OXY5363A User's Manual

Revision Date: March 18, 2022

Field Name	Authorized Signatures
Default Value	Size:0, Keys:0, Key source: No Keys
Help	Enroll Factory Defaults or load certificates from a file: 1.Public Key Certificate: a)EFI_SIGNATURE_LIST b)EFI_CERT_X509 (DER) c)EFI_CERT_RSA2048 (bin) d)EFI_CERT_SHAXXX 2.Authenticated UEFI Variable 3.EFI PE/COFF Image(SHA256) Key Source: Factory,External,Mixed
Comment	Press Enter when selected to go into the associated Sub-Menu.

Field Name	Forbidden Signatures
Default Value	Size:0, Keys:0, Key source: No Keys
Help	Enroll Factory Defaults or load certificates from a file: 1.Public Key Certificate: a)EFI_SIGNATURE_LIST b)EFI_CERT_X509 (DER) c)EFI_CERT_RSA2048 (bin) d)EFI_CERT_SHAXXX 2.Authenticated UEFI Variable 3.EFI PE/COFF Image(SHA256) Key Source: Factory,External,Mixed
Comment	Press Enter when selected to go into the associated Sub-Menu.

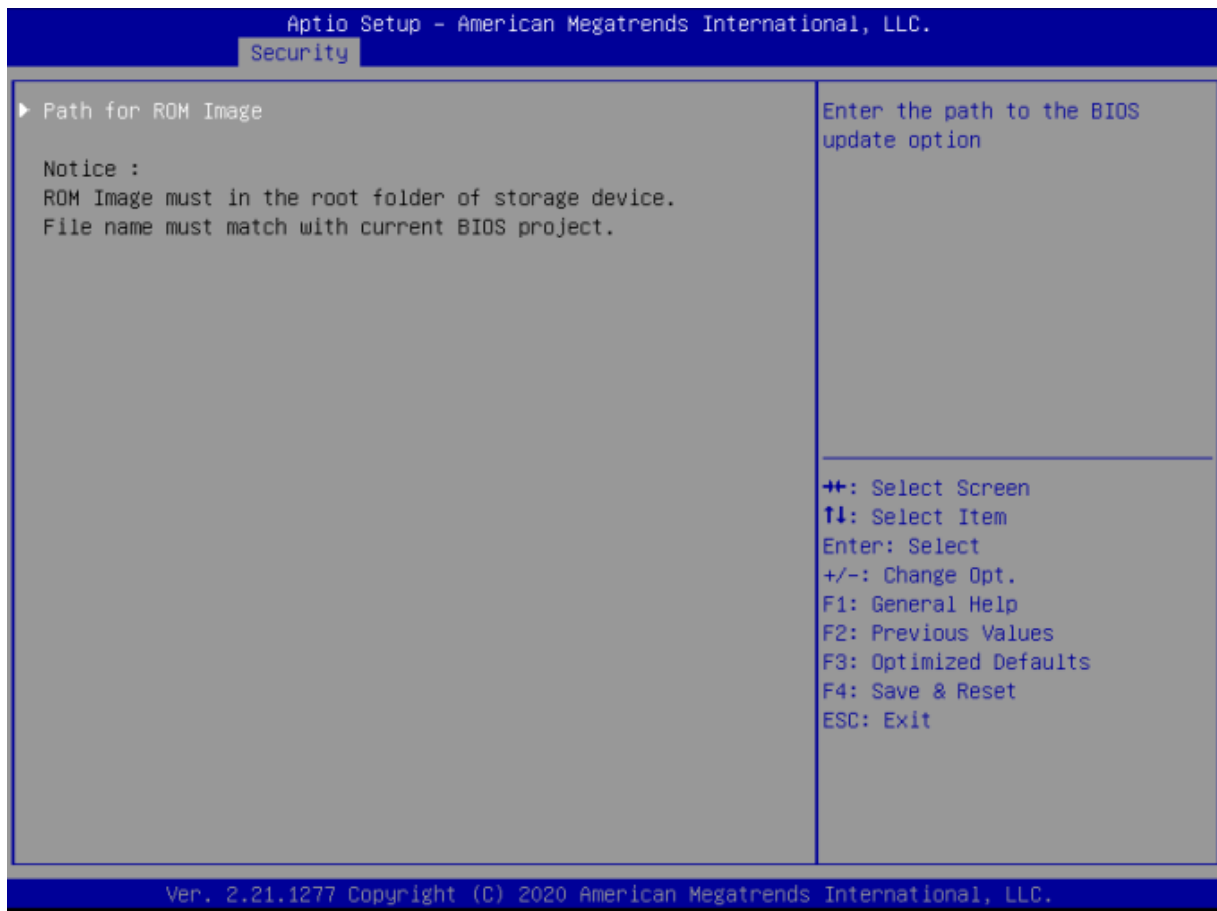
OXY5363A User's Manual

Revision Date: March 18, 2022

Field Name	Authorized TimeStamps
Default Value	Size:0, Keys:0, Key source: No Keys
Help	Enroll Factory Defaults or load certificates from a file: 1.Public Key Certificate: a)EFI_SIGNATURE_LIST b)EFI_CERT_X509 (DER) c)EFI_CERT_RSA2048 (bin) d)EFI_CERT_SHAXXX 2.Authenticated UEFI Variable 3.EFI PE/COFF Image(SHA256) Key Source: Factory,External,Mixed
Comment	Press Enter when selected to go into the associated Sub-Menu.

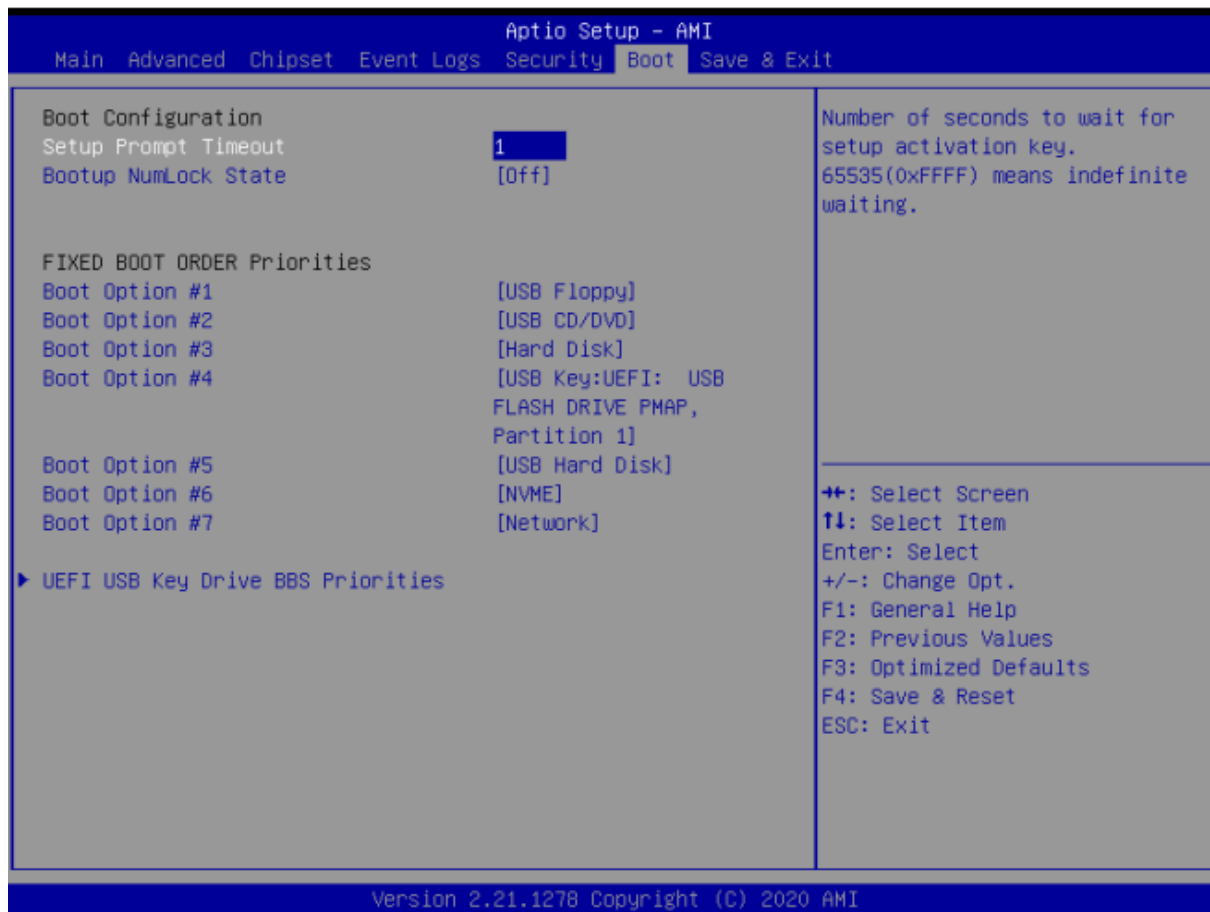
Field Name	OsRecovery Signatures
Default Value	Size:0, Keys:0, Key source: No Keys
Help	Enroll Factory Defaults or load certificates from a file: 1.Public Key Certificate: a)EFI_SIGNATURE_LIST b)EFI_CERT_X509 (DER) c)EFI_CERT_RSA2048 (bin) d)EFI_CERT_SHAXXX 2.Authenticated UEFI Variable 3.EFI PE/COFF Image(SHA256) Key Source: Factory,External,Mixed
Comment	Press Enter when selected to go into the associated Sub-Menu.

3.4.4 BIOS Update



Field Name	Path for ROM Image
Help	Enter the path to the Secure flash option

3.5 Boot Page



Field Name	Setup Prompt Timeout
Default Value	1
Possible Value	1~65535
Comment	Number of seconds to wait for setup activation key. 65535(0xFFFF) means indefinite waiting.

Field Name	Bootup NumLock State
Default Value	[Off]
Possible Value	On Off
Comment	Select the keyboard NumLock state

OXY5363A User's Manual

Revision Date: March 18, 2022

Field Name	Boot Option #1
Default Value	[USB Floppy]
Possible Value	USB Floppy, CD/DVD, USB CD/DVD, Hard Disk , USB Key, USB Hard Disk , NVME, Network, Disabled
Comment	Sets the system boot order

Field Name	Boot Option #2
Default Value	[USB CD/DVD]
Possible Value	USB Floppy, CD/DVD, USB CD/DVD, Hard Disk , USB Key, USB Hard Disk , NVME, Network, Disabled
Comment	Sets the system boot order

Field Name	Boot Option #3
Default Value	[Hard Disk]
Possible Value	USB Floppy, CD/DVD, USB CD/DVD, Hard Disk , USB Key, USB Hard Disk , NVME, Network, Disabled
Comment	Sets the system boot order

Field Name	Boot Option #4
Default Value	[USB Key]
Possible Value	USB Floppy, CD/DVD, USB CD/DVD, Hard Disk , USB Key, USB Hard Disk , NVME, Network, Disabled
Comment	Sets the system boot order

Field Name	Boot Option #5
Default Value	[USB Hard Disk]
Possible Value	USB Floppy, CD/DVD, USB CD/DVD, Hard Disk , USB Key, USB Hard Disk , NVME, Network, Disabled
Comment	Sets the system boot order

Field Name	Boot Option #6
Default Value	[NVME]
Possible Value	USB Floppy, CD/DVD, USB CD/DVD, Hard Disk , USB Key, USB Hard Disk , NVME, Network, Disabled
Comment	Sets the system boot order

OXY5363A User's Manual

Revision Date: March 18, 2022

Field Name	Boot Option #7
Default Value	[Network]
Possible Value	USB Floppy, CD/DVD, USB CD/DVD, Hard Disk , USB Key, USB Hard Disk , NVME, Network, Disabled
Comment	Sets the system boot order

Field Name	(UEFI) USB Floppy Drive BBS Priorities
Help	Specifies the Boot Device Priority sequence from available USB Floppy Drives.
Comment	Press Enter when selected to go into the associated Sub-Menu.

Field Name	(UEFI) USB CDROM/DVD ROM Drive BBS Priorities
Help	Specifies the Boot Device Priority sequence from available USB CDROM/DVD Drives.
Comment	Press Enter when selected to go into the associated Sub-Menu.

Field Name	(UEFI) Hard Disk Drive BBS Priorities
Help	Specifies the Boot Device Priority sequence from available Hard Disk Drives.
Comment	Press Enter when selected to go into the associated Sub-Menu.

Field Name	(UEFI) USB KEY Drive BBS Priorities
Help	Specifies the Boot Device Priority sequence from available Hard Disk Drives.
Comment	Press Enter when selected to go into the associated Sub-Menu.

Field Name	(UEFI) USB Hard Disk Drive BBS Priorities
Help	Specifies the Boot Device Priority sequence from available Hard Disk Drives.
Comment	Press Enter when selected to go into the associated Sub-Menu.

Field Name	(UEFI) NVME Drive BBS Priorities
Help	Specifies the Boot Device Priority sequence from available Hard Disk Drives.
Comment	Press Enter when selected to go into the associated Sub-Menu.

Field Name	(UEFI) NETWORK Drive BBS Priorities
Help	Specifies the Boot Device Priority sequence from available Hard Disk Drives.
Comment	Press Enter when selected to go into the associated Sub-Menu.

3.5.1 (List Boot Device Type) Drive BBS Priorities



Field Name	Boot Option #1
Default Value	
Possible Value	Boot Device Name 1 of this type, Disable
Help	Sets the system boot order

3.6 Save & Exit Page



Field Name	Save Changes and Reset
Help	Reset the system after saving the changes.

Field Name	Discard Changes and Rest
Help	Reset system setup without saving any changes.

Field Name	Restore Defaults
Help	Restore/Load Default values for all the setup options.