



LAND



SEA



AIR

# SKA30

3U VPX 3 SLOTS BACKPLANE



## Key Feature

- Compliant to VITA 46.0 baseline specification
- 3 Payload Slots VPX
- Single Star x4 (2 FPs) configuration for Data Plane
- PCB size 167.96 mm x 128.7 mm x 5.1 mm
- 7.5 HP from slot to slot (38.1 mm)
- Operating temperature: -40°C - +85°C
- Storage temperature: -55°C - +85°C



# Instructions

VPX is a broadly defined technology utilizing the latest in a variety of switch fabric technologies in 3U format blades. Open VPX is the architecture framework that defines system level VPX interoperability for multi-vendor, multi-module, integrated system environments.

The Open VPX framework defines clear interoperability points necessary for integration between Module to Module, Module to Backplane and Chassis. Open VPX recommends, but does not specify development systems to assist evaluation, prototype and development of VPX systems. Open VPX will evolve and include new fabric, connector and system technology as newer standards are defined.

Our VPX backplanes are hand-made with quality and longevity in mind. Ask your Hartmann representative which configuration is best for you!

# Specifications

Form Factor	3U
-------------	----

Slots	3x
-------	----

Slot Pitch	7.5HP common
------------	--------------

## DISPLAY

Display Port	2x Mini Display Port outputs from GPU
--------------	---------------------------------------

	1x Mini Display Port output from VPX module
--	---

## EXPANSION

SATA	2x SATAIII
------	------------

LAN	1x 10/100/1000mb/2.5G Ethernet Ports(One from VPX module)
-----	---

USB	1x USB 3.0 + 1x USB2.0
-----	------------------------

Serial Pot	1x RS422(Com1)
------------	----------------

IPMI	1x
------	----

GPIO	4x
------	----

Battery	1x Battery Header
---------	-------------------

## POWER SYSTEM

Input Power: VPX	1x 12V DC-IN
------------------	--------------

Input Power: GPU	2x 12V DC-IN
------------------	--------------

RTC Battery	3V CR2032
-------------	-----------

## MECHANICAL AND ENVIRONMENTAL

Dimension 167.96 mm x 128.7 mm x 5.1 mm

Operating Temp -40°C to 85°C

Storage Temp -55°C to 85°C

Relative Humidity 10% to 90%, non-condensing

## STANDARD COMPLIANCE

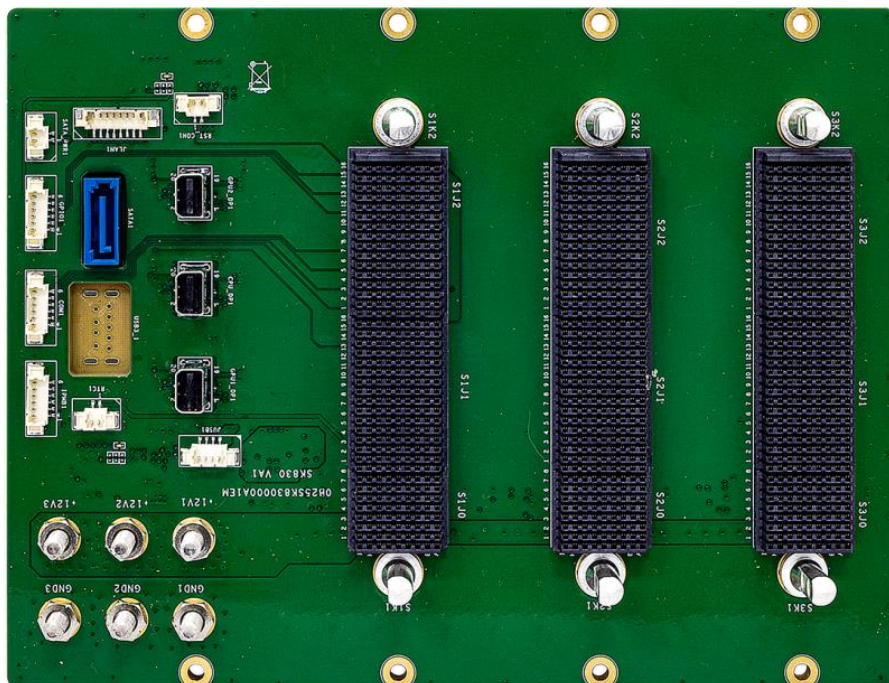
Standard Compliance CE/FCC

## OS

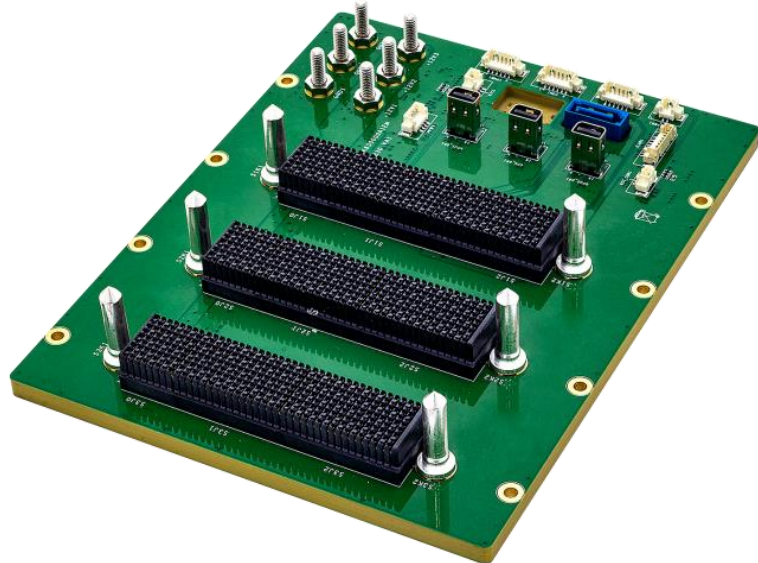
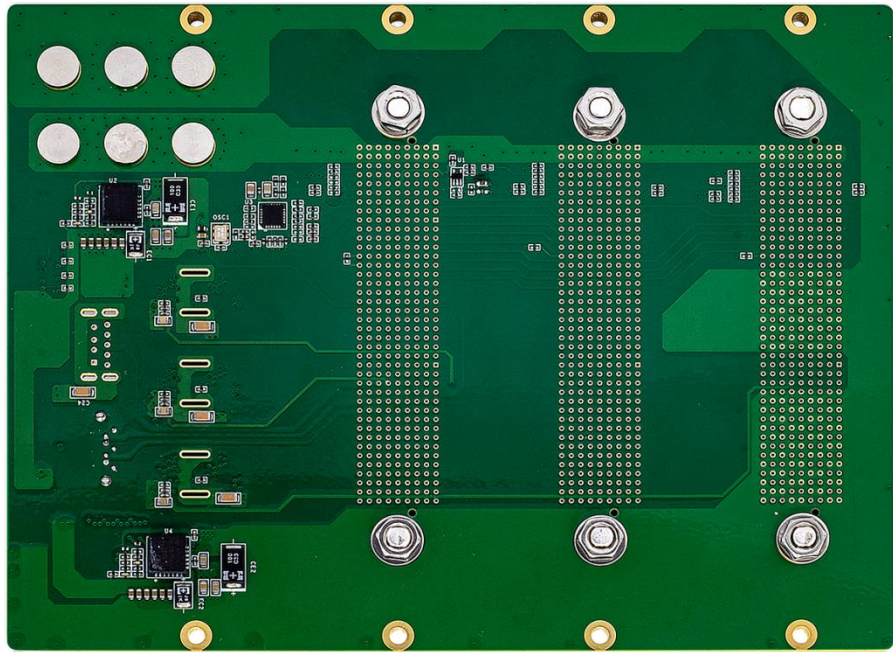
OS Support Windows®10 64bit, Linux(Support by request)

\*All specifications and photos are subject to change without notice.

## Appearance







# Block Diagram

