



LAND



SEA



AIR

CLOUD12-P18

MILITARY 12.1" TOUGH PANEL COMPUTER



- MIL-STD-810 Thermal, Shock, Vibration, Humidity
- Sunlight Readable 1000 Nits
- Intel 13th Core i7 Platform
- 12.1" Colorful LCD WXGA resolution
- 18 Programmable Function Keys
- Optical Bonding G.F.G Resistive Touch
- EMI MESH Integrated
- IP65 Rating with DTL38999
- Extended Temperature -40°C to 60°C

Optional Features

- IR Touch
- -55°C Boot Up
- NVIS Mode Support Dimmable < 1% Nits

Specifications

12.1" TFT LCD DISPLAY & RESISTOR TOUCH SCREEN

Resolution	1280 x 800 WXGA	Brightness	1000 nits
Aspect Ratio	16:10		
Touch Panel	Glass-Film-Glass 5-Wire resistor touch panel		

SYSTEM SPEC

CPU	Intel® Raptor Lake i7-1365UE Processor (2P+8E/12T, 1.7/4.9 GHz, 12M Cache, TDP 15W) Intel® Tiger Lake i3-1115G4E Processor (2C/4T, 2.2/3.9 GHz, 6M Cache , Max.28W)		
Memory type	1x 8GB SO-DIMM, DDR5/DDR4, 5200/3200 (up to 64/32 GB)		
Graphics	Intel® Iris® Xe Graphics eligible for 13th Gen Intel® Processors Intel® UHD Graphics for 11th Gen Intel® Processors		
Storage	1x M.2 SATA III 256GB SSD		
Power Button	1x Power Button with LED indicator		
NVIS(Options)	NVIS Mode Support Dimmable < 1% Nits		
OSD	Backlight Dim+ Backlight Dim-		
Function key	6+6+6 Soft programmable function Buttons		
DC-IN	9V ~ 36V, DC-IN Optional:18V~36V MIL-STD-461, MIL-STD-1275,		

CONNECTORS

DC-IN	1x Power DC-IN		
IO Ports	X1: 2x USB2.0 + 1x RS232/422/485		
	X2: 2x 1GbE LAN		
	X3: 1x HDMI		
	IP68 Water valve (VENT-MS1NMS-08001)		

APPLICATIONS

Applications	Marine, Naval, Ground and Airborne environment.		
--------------	---	--	--

PHYSICAL

Dimension	369.7 x 280.2 x 65 mm (W x D x H)	Weight	7.5 Kg	Finish	Anodic aluminum oxide
Chassis	Aluminum Alloy, Corrosion Resistant	Ingress Protection	IP65 Dust /water Proof		

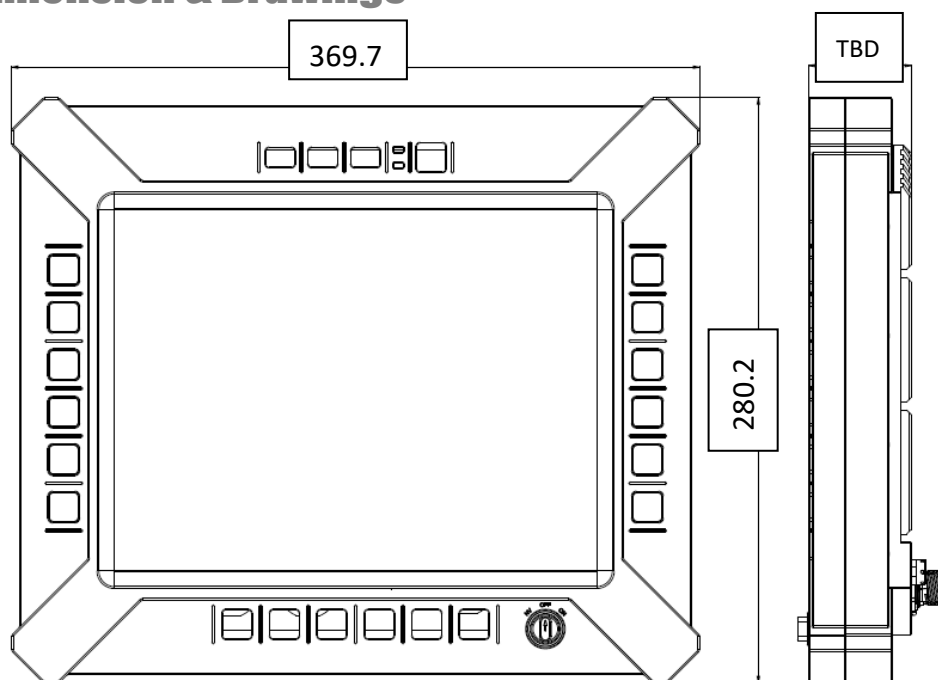
MIL COMPLIANCE

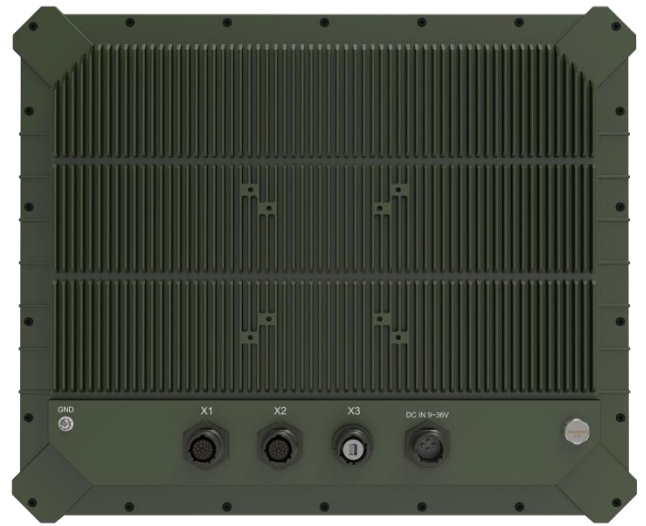
MIL-STD-810 (Operation Test)

Low Temp.	Method 502.5 Procedure 2	Exposure(24h x 3 cycle) at -20°C min.	
High Temp.	Method 501.5 Procedure 2	60°C for 2 hrs after temperature stabilization.	
Humidity	Method 507.5 Procedure 2	RH -95%. Test cycles: ten 24-hrs , functional test after 5th and 10th cycles	

Vibration	Method 514.6 Category 20	10-500Hz 1.04Grms Test duration: 1 hr x 3 axis (total 3 hrs)
Shock	Method 516.6 Procedure 1	20G, 11mSec, 3 per axis
MIL-STD-810 (Non-Operating Tests)		
Low Temp.	Method 502.5	Exposure(24h x 7 cycle) at -20°C min.
High Temp.	Method 501.5 Procedure 1	71°C for 2 hrs after temperature stabilization.
bration	Method 514.6 Category 24	200 to 2000Hz Test duration: 1 hr per axis; rms = 7.7 gs
Shock	Method 516.6 Procedure 1	20G, 11mSec, 3 per axis
MIL-STD-461 (Option)		
CE102	2 MHz - 30 MHz	
RE102	1.5 MHz -30 MHz - 5 GHz	
RS103	1.5 MHz - 5 GHz	
ENVIRONMENTAL QUALIFICATIONS		
Regulatory	CE , FCC Compliance	
Operation Temp.	-20°C~60°C (ambient with air flow)	
Extended Temp. (Options)	-40°C to 60°C	
Storage Temp.	-40~+85 °C	
Green Product	RoHS, WEEE compliance	

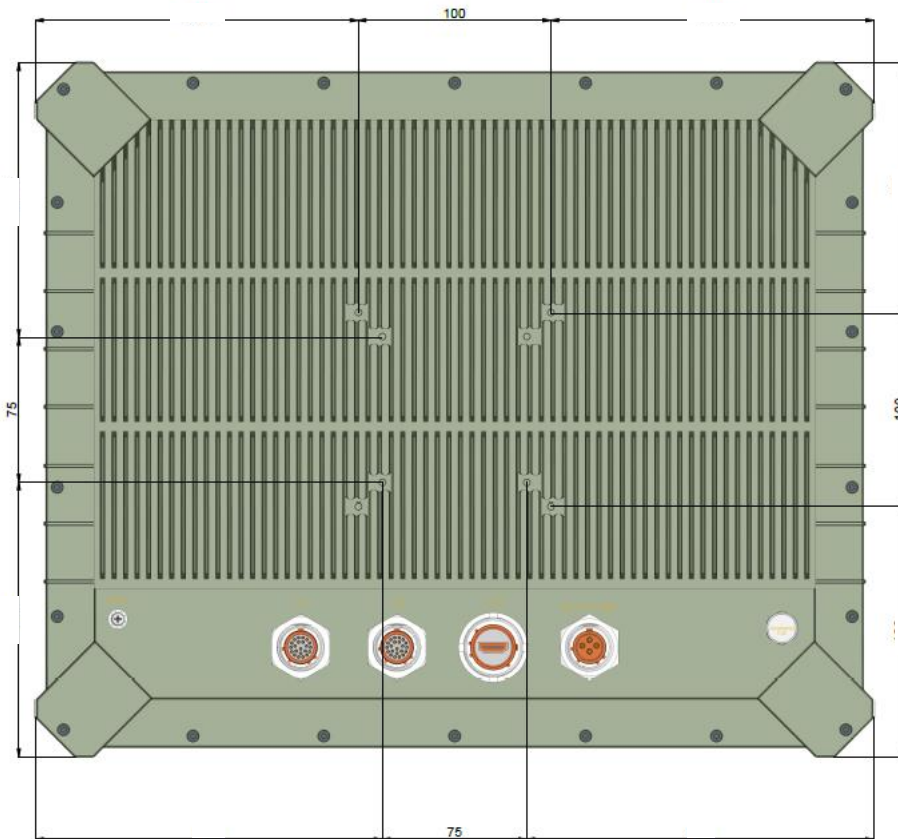
Dimension & Drawings





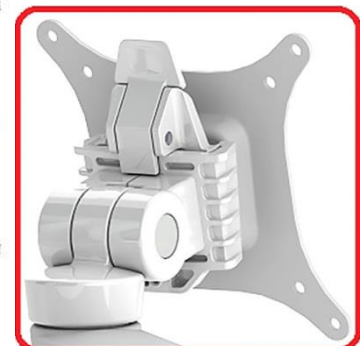
Mounting Type

VESA Mount

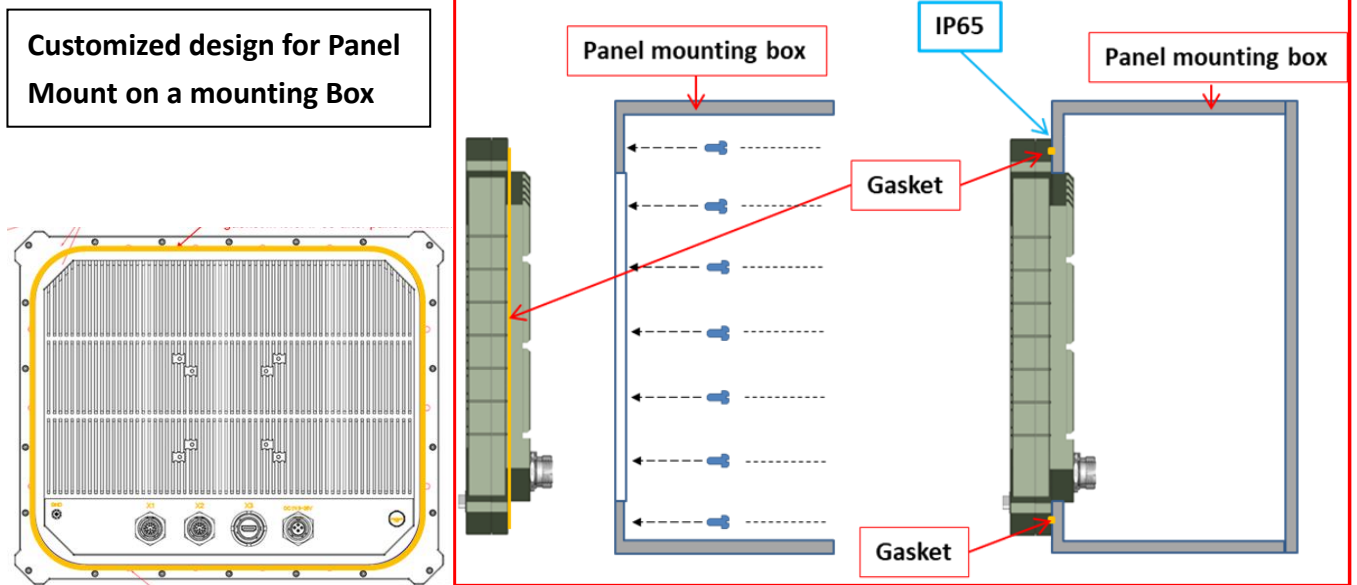


VESA 100/75 standard mounting hole pattern:

1. 75mm x 75mm or 100mm x 100mm
2. Screws are 4 or 6mm.
3. The four holes may be centered or located on the lower edge of the monitor.



Panel Mount (Option)



Ordering Information

Cloud12-P18	A	B
CPU	Core-i3(-1115G4E)	Core-i7(-1365UE)
Memory	DDR4 8GB (up to 32GB)	DDR5 8GB (up to 64GB)
Storage1	M.2 B Key 256GB	M.2 M Key 256GB
Storage2	1x SATA III	1x SATA III
GPU	Intel® UHD Graphics	Intel® Iris® Xe Graphics
LAN1	1x 1GbE	
LAN2	1x 2.5GbE	
Function Key	18 (6+6+6)	
NVIS	Options	
USB	2x USB	
Display	1x HDMI	
COM	1x RS232/422/485	